

Flotillin 2 Antibody
Rabbit mAb
Catalog # AP90085**Specification**

Flotillin 2 Antibody - Product Information

Application	WB, IP
Primary Accession	Q14254
Reactivity	Rat
Clonality	Monoclonal
Other Names	
epidermal surface antigen; ESA; flotillin-2; Membrane component chromosome 17 surface marker 1; ESA1; M17S1	
Isotype	Rabbit IgG
Host	Rabbit
Calculated MW	47064 Da

Flotillin 2 Antibody - Additional Information

Dilution	WB~~1:1000 IP~~N/A
Purification	Affinity-chromatography
Immunogen	A synthesized peptide derived from human Flotillin 2
Description	May act as a scaffolding protein within caveolar membranes, functionally participating in formation of caveolae or caveolae-like vesicles. May be involved in epidermal cell adhesion and epidermal structure and function.
Storage Condition and Buffer	Rabbit IgG in phosphate buffered saline , pH 7.4, 150mM NaCl, 0.02% sodium azide and 50% glycerol. Store at +4°C short term. Store at -20°C long term. Avoid freeze / thaw cycle.

Flotillin 2 Antibody - Protein Information**Name** FLOT2**Synonyms** ESA1, M17S1**Function**

May act as a scaffolding protein within caveolar membranes, functionally participating in formation of caveolae or caveolae-like vesicles. May be involved in epidermal cell adhesion and epidermal structure and function.

Cellular Location

Cell membrane; Peripheral membrane protein. Membrane, caveola; Peripheral membrane protein. Endosome Membrane; Lipid-anchor. Note=Membrane- associated protein of caveolae

Tissue Location

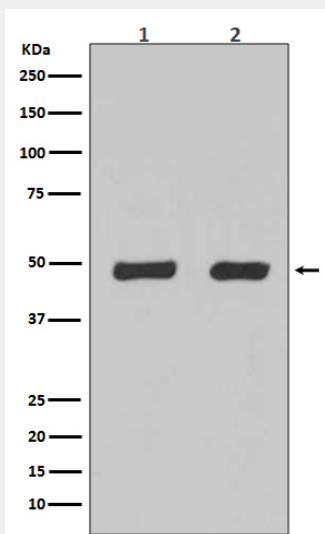
In skin, expressed in epidermis and epidermal appendages but not in dermis. Expressed in all layers of the epidermis except the basal layer. In hair follicles, expressed in the suprabasal layer but not the basal layer. Also expressed in melanoma and carcinoma cell lines, fibroblasts and foreskin melanocytes

Flotillin 2 Antibody - Protocols

Provided below are standard protocols that you may find useful for product applications.

- [Western Blot](#)
- [Blocking Peptides](#)
- [Dot Blot](#)
- [Immunohistochemistry](#)
- [Immunofluorescence](#)
- [Immunoprecipitation](#)
- [Flow Cytometry](#)
- [Cell Culture](#)

Flotillin 2 Antibody - Images



Western blot analysis of Flotillin-2 expression in (1) HeLa cell lysate; (2) 293 cell lysate.