

**Caveolin-1 Antibody**  
**Rabbit mAb**  
**Catalog # AP90088****Specification**

---

**Caveolin-1 Antibody - Product Information**

Application	WB, IHC, FC, ICC
Primary Accession	<a href="#">Q03135</a>
Reactivity	Rat
Clonality	Monoclonal
<b>Other Names</b>	
BSCL3; CGL3; caveolin 1, caveolae protein, 22kDa; Caveolin-1; VIP21; CAV; CAV1.	
Isotype	Rabbit IgG
Host	Rabbit
Calculated MW	20472 Da

**Caveolin-1 Antibody - Additional Information**

Dilution	WB~~1:1000 IHC~~1:100~500 FC~~1:10~50 ICC~~N/A
Purification	Affinity-chromatography
Immunogen	A synthesized peptide derived from human Caveolin-1
Description	Caveolin-1 may act as a scaffolding protein within caveolar membranes. Interacts directly with G-protein alpha subunits and can functionally regulate their activity (By similarity). Involved in the costimulatory signal essential for T-cell receptor (TCR)-mediated T-cell activation. Its binding to DPP4 induces T-cell proliferation and NF-kappa-B activation in a T-cell receptor/CD3-dependent manner. Recruits CTNNB1 to caveolar membranes and may regulate CTNNB1-mediated signaling through the Wnt pathway.
Storage Condition and Buffer	Rabbit IgG in phosphate buffered saline , pH 7.4, 150mM NaCl, 0.02% sodium azide and 50% glycerol. Store at +4°C short term. Store at -20°C long term. Avoid freeze / thaw cycle.

**Caveolin-1 Antibody - Protein Information****Name** CAV1

## Synonyms CAV

### Function

May act as a scaffolding protein within caveolar membranes (PubMed:<a href="http://www.uniprot.org/citations/11751885" target="\_blank">11751885</a>). Forms a stable heterooligomeric complex with CAV2 that targets to lipid rafts and drives caveolae formation. Mediates the recruitment of CAVIN proteins (CAVIN1/2/3/4) to the caveolae (PubMed:<a href="http://www.uniprot.org/citations/19262564" target="\_blank">19262564</a>). Interacts directly with G-protein alpha subunits and can functionally regulate their activity (By similarity). Involved in the costimulatory signal essential for T-cell receptor (TCR)-mediated T-cell activation. Its binding to DPP4 induces T-cell proliferation and NF-kappa-B activation in a T-cell receptor/CD3-dependent manner (PubMed:<a href="http://www.uniprot.org/citations/17287217" target="\_blank">17287217</a>). Recruits CTNNB1 to caveolar membranes and may regulate CTNNB1-mediated signaling through the Wnt pathway (By similarity). Negatively regulates TGFBR1-mediated activation of SMAD2/3 by mediating the internalization of TGFBR1 from membrane rafts leading to its subsequent degradation (PubMed:<a href="http://www.uniprot.org/citations/25893292" target="\_blank">25893292</a>). Binds 20(S)-hydroxycholesterol (20(S)-OHC) (By similarity).

### Cellular Location

Golgi apparatus membrane; Peripheral membrane protein. Cell membrane; Peripheral membrane protein. Membrane, caveola; Peripheral membrane protein. Membrane raft. Golgi apparatus, trans-Golgi network {ECO:0000250|UniProtKB:P33724} Note=Colocalized with DPP4 in membrane rafts. Potential hairpin-like structure in the membrane. Membrane protein of caveolae

### Tissue Location

Skeletal muscle, liver, stomach, lung, kidney and heart (at protein level). Expressed in the brain

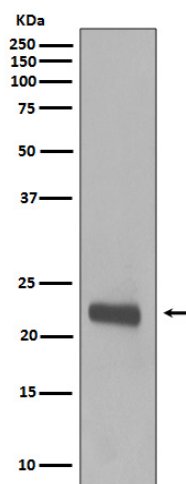
## Caveolin-1 Antibody - Protocols

Provided below are standard protocols that you may find useful for product applications.

- [Western Blot](#)
- [Blocking Peptides](#)
- [Dot Blot](#)
- [Immunohistochemistry](#)
- [Immunofluorescence](#)
- [Immunoprecipitation](#)
- [Flow Cytometry](#)
- [Cell Culture](#)

## Caveolin-1 Antibody - Images





Western blot analysis of Caveolin-1 expression in A431 cell lysate.