

**CLTA Antibody (Center)**  
**Affinity Purified Rabbit Polyclonal Antibody (Pab)**  
**Catalog # AP9008c****Specification**

---

**CLTA Antibody (Center) - Product Information**

Application	FC, WB, IHC-P,E
Primary Accession	<a href="#">P09496</a>
Reactivity	Human
Host	Rabbit
Clonality	Polyclonal
Isotype	Rabbit IgG
Calculated MW	27077
Antigen Region	99-127

**CLTA Antibody (Center) - Additional Information****Gene ID** 1211**Other Names**

Clathrin light chain A, Lca, CLTA

**Target/Specificity**

This CLTA antibody is generated from rabbits immunized with a KLH conjugated synthetic peptide between 99-127 amino acids from the Central region of human CLTA.

**Dilution**

FC~~1:10~50

WB~~1:1000

IHC-P~~1:50~100

E~~Use at an assay dependent concentration.

**Format**

Purified polyclonal antibody supplied in PBS with 0.09% (W/V) sodium azide. This antibody is purified through a protein A column, followed by peptide affinity purification.

**Storage**

Maintain refrigerated at 2-8°C for up to 2 weeks. For long term storage store at -20°C in small aliquots to prevent freeze-thaw cycles.

**Precautions**

CLTA Antibody (Center) is for research use only and not for use in diagnostic or therapeutic procedures.

**CLTA Antibody (Center) - Protein Information****Name** CLTA

**Function** Clathrin is the major protein of the polyhedral coat of coated pits and vesicles. Acts as a component of the TACC3/ch- TOG/clathrin complex proposed to contribute to stabilization of kinetochore fibers of the mitotic spindle by acting as inter- microtubule bridge (PubMed:[15858577](#), PubMed:[21297582](#)).

#### Cellular Location

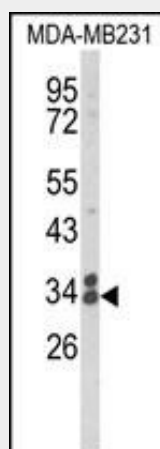
Cytoplasmic vesicle membrane; Peripheral membrane protein; Cytoplasmic side. Membrane, coated pit; Peripheral membrane protein; Cytoplasmic side. Cytoplasm, cytoskeleton, spindle Note=Cytoplasmic face of coated pits and vesicles. In complex with TACC3 and CKAP5 (forming the TACC3/ch-TOG/clathrin complex) localized to inter-microtubule bridges in mitotic spindles.

#### CLTA Antibody (Center) - Protocols

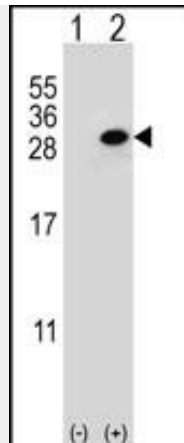
Provided below are standard protocols that you may find useful for product applications.

- [Western Blot](#)
- [Blocking Peptides](#)
- [Dot Blot](#)
- [Immunohistochemistry](#)
- [Immunofluorescence](#)
- [Immunoprecipitation](#)
- [Flow Cytometry](#)
- [Cell Culture](#)

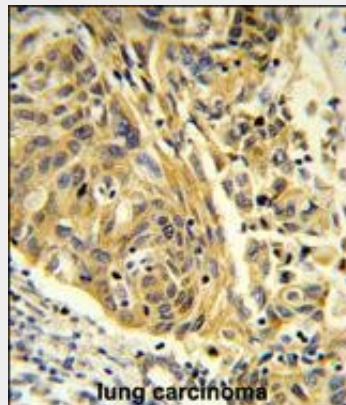
#### CLTA Antibody (Center) - Images



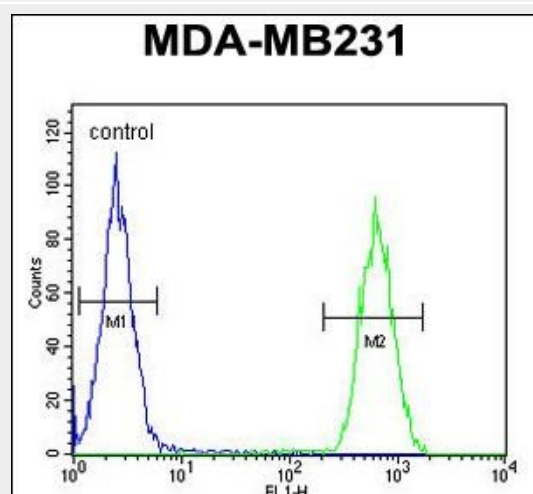
Western blot analysis of CLTA Antibody (Center) (Cat. #AP9008c) in MDA-MB231 cell line lysates (35ug/lane). CLTA (arrow) was detected using the purified Pab.



Western blot analysis of CLTA (arrow) using rabbit polyclonal CLTA Antibody (Center) (Cat. #AP9008c). 293 cell lysates (2 ug/lane) either nontransfected (Lane 1) or transiently transfected (Lane 2) with the CLTA gene.



Formalin-fixed and paraffin-embedded human lung carcinoma reacted with CLTA Antibody (Center), which was peroxidase-conjugated to the secondary antibody, followed by DAB staining. This data demonstrates the use of this antibody for immunohistochemistry; clinical relevance has not been evaluated.



CLTA Antibody (Center) (Cat. #AP9008c) flow cytometric analysis of MDA-MB231 cells (right histogram) compared to a negative control cell (left histogram). FITC-conjugated goat-anti-rabbit secondary antibodies were used for the analysis.

#### CLTA Antibody (Center) - Background

Clathrin is a large, soluble protein composed of heavy and light chains. It functions as the main structural component of the lattice-type cytoplasmic face of coated pits and vesicles which entrap specific macromolecules during receptor-mediated endocytosis. CLTA is one of two clathrin light chain proteins which are believed to function as regulatory elements.

#### **CLTA Antibody (Center) - References**

Wong,D.H., et.al., J. Neurosci. 10 (9), 3025-3031 (1990) Nathke,I., et.al., J. Biol. Chem. 265 (30), 18621-18627 (1990)