

IKB alpha Antibody
Rabbit mAb
Catalog # AP90093

Specification

IKB alpha Antibody - Product Information

Application	WB, IHC, ICC, IP
Primary Accession	P25963
Reactivity	Rat
Clonality	Monoclonal
Other Names	
I-kappa-B-alpha; NFKBI; NFKBIA; NF-kappaB inhibitor alpha; IKBA; IkappaBalpha; MAD3; RL/IF-1;	
Isotype	Rabbit IgG
Host	Rabbit
Calculated MW	35609 Da

IKB alpha Antibody - Additional Information

Purification	Affinity-chromatography
Immunogen	A synthesized peptide derived from human IKB alpha
Description	NFKB1 (MIM 164011) or NFKB2 (MIM 164012) is bound to REL (MIM 164910), RELA (MIM 164014), or RELB (MIM 604758) to form the NFKB complex. The NFKB complex is inhibited by I-kappa-B proteins (NFKBIA or NFKBIB, MIM 604495), which inactivate NF-kappa-B by trapping it in the cytoplasm.
Storage Condition and Buffer	Rabbit IgG in phosphate buffered saline , pH 7.4, 150mM NaCl, 0.02% sodium azide and 50% glycerol. Store at +4°C short term. Store at -20°C long term. Avoid freeze / thaw cycle.

IKB alpha Antibody - Protein Information

Name NFKBIA

Synonyms IKBA, MAD3, NFKBI

Function

Inhibits the activity of dimeric NF-kappa-B/REL complexes by trapping REL (RELA/p65 and NFKB1/p50) dimers in the cytoplasm by masking their nuclear localization signals (PubMed:1493333, PubMed:36651806, PubMed:7479976). On cellular stimulation by immune and pro-inflammatory responses, becomes phosphorylated promoting

ubiquitination and degradation, enabling the dimeric RELA to translocate to the nucleus and activate transcription (PubMed:[7479976](http://www.uniprot.org/citations/7479976), PubMed:[7628694](http://www.uniprot.org/citations/7628694), PubMed:[7796813](http://www.uniprot.org/citations/7796813), PubMed:[7878466](http://www.uniprot.org/citations/7878466)).

Cellular Location

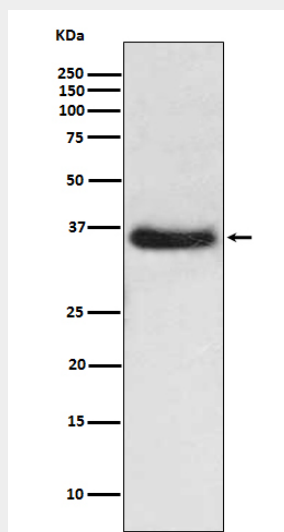
Cytoplasm. Nucleus. Note=Shuttles between the nucleus and the cytoplasm by a nuclear localization signal (NLS) and a CRM1-dependent nuclear export.

IKB alpha Antibody - Protocols

Provided below are standard protocols that you may find useful for product applications.

- [Western Blot](#)
- [Blocking Peptides](#)
- [Dot Blot](#)
- [Immunohistochemistry](#)
- [Immunofluorescence](#)
- [Immunoprecipitation](#)
- [Flow Cytometry](#)
- [Cell Culture](#)

IKB alpha Antibody - Images



Western blot analysis of IKB alpha expression in HeLa cell lysate.