

**alpha smooth muscle Actin Antibody**  
**Rabbit mAb**  
**Catalog # AP90094****Specification**

---

**alpha smooth muscle Actin Antibody - Product Information**

Application	WB, IHC, FC, IP
Primary Accession	<a href="#">P62736</a>
Reactivity	Rat
Clonality	Monoclonal
<b>Other Names</b>	
Actin, aortic smooth muscle; Alpha-actin-2; ACTA2; ACTSA; ACTVS; GIG46;	
Isotype	Rabbit IgG
Host	Rabbit
Calculated MW	42009 Da

**alpha smooth muscle Actin Antibody - Additional Information**

Dilution	WB~~1:1000 IHC~~1:100~500 FC~~1:10~50 IP~~N/A
Purification	Affinity-chromatography
Immunogen	A synthesized peptide derived from human alpha smooth muscle Actin
Description	Defects in ACTA2 are the cause of aortic aneurysm familial thoracic type 6 (AAT6) [MIM:611788]. AATs are characterized by permanent dilation of the thoracic aorta usually due to degenerative changes in the aortic wall.
Storage Condition and Buffer	Rabbit IgG in phosphate buffered saline , pH 7.4, 150mM NaCl, 0.02% sodium azide and 50% glycerol. Store at +4°C short term. Store at -20°C long term. Avoid freeze / thaw cycle.

**alpha smooth muscle Actin Antibody - Protein Information****Name** ACTA2**Synonyms** ACTSA, ACTVS**Function**

Actins are highly conserved proteins that are involved in various types of cell motility and are ubiquitously expressed in all eukaryotic cells.

**Cellular Location**

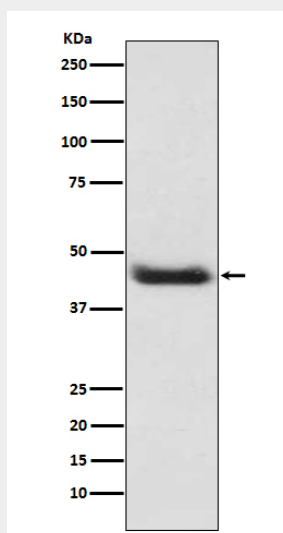
Cytoplasm, cytoskeleton.

### **alpha smooth muscle Actin Antibody - Protocols**

Provided below are standard protocols that you may find useful for product applications.

- [Western Blot](#)
- [Blocking Peptides](#)
- [Dot Blot](#)
- [Immunohistochemistry](#)
- [Immunofluorescence](#)
- [Immunoprecipitation](#)
- [Flow Cytometry](#)
- [Cell Culture](#)

### **alpha smooth muscle Actin Antibody - Images**



Western blot analysis of alpha smooth muscle Actin expression in A431 cell lysate.