

**CPI17 alpha Antibody**  
**Rabbit mAb**  
**Catalog # AP90106****Specification**

---

**CPI17 alpha Antibody - Product Information**

Application	WB, IP
Primary Accession	<a href="#">Q96A00</a>
Reactivity	Rat, Human, Mouse
Clonality	Monoclonal
<b>Other Names</b>	
CPI17; PKC-potentiated inhibitory protein of PP1; PP14A; PPP1INL; PPP1R14A;	
Isotype	Rabbit IgG
Host	Rabbit
Calculated MW	16693 Da

**CPI17 alpha Antibody - Additional Information**

Dilution	WB~~1:1000 IP~~N/A
Purification	Affinity-chromatography
Immunogen	A synthesized peptide derived from human CPI17 alpha
Description	CPI17 alpha a phosphorylation-dependent inhibitory subunit of protein phosphatase 1 (PP-1A). Phosphorylation by PKC regulates its binding to PP-1A. Acts co-operatively to inhibit myosin light chain phosphatase (MLCP) activity.
Storage Condition and Buffer	Rabbit IgG in phosphate buffered saline , pH 7.4, 150mM NaCl, 0.02% sodium azide and 50% glycerol. Store at +4°C short term. Store at -20°C long term. Avoid freeze / thaw cycle.

**CPI17 alpha Antibody - Protein Information****Name** PPP1R14A**Synonyms** CPI17, PPP1INL**Function**

Inhibitor of PPP1CA. Has over 1000-fold higher inhibitory activity when phosphorylated, creating a molecular switch for regulating the phosphorylation status of PPP1CA substrates and smooth muscle contraction.

**Cellular Location**

Cytoplasm.

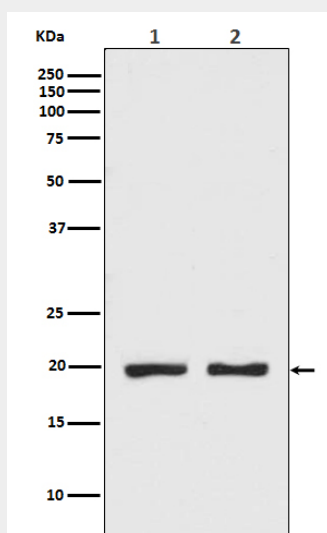
**Tissue Location**

Isoform 1 is detected in aorta and testis. Isoform 2 is detected in aorta.

**CPI17 alpha Antibody - Protocols**

Provided below are standard protocols that you may find useful for product applications.

- [Western Blot](#)
- [Blocking Peptides](#)
- [Dot Blot](#)
- [Immunohistochemistry](#)
- [Immunofluorescence](#)
- [Immunoprecipitation](#)
- [Flow Cytometry](#)
- [Cell Culture](#)

**CPI17 alpha Antibody - Images**

Western blot analysis of CPI17 alpha expression in (1) MCF7 cell lysate; (2) 293T cell lysate.