

**Phospho-Creb (S133) Antibody**  
**Rabbit mAb**  
**Catalog # AP90110****Specification**

---

**Phospho-Creb (S133) Antibody - Product Information**

Application	WB, IHC, FC, ICC, IP
Primary Accession	<a href="#">P16220</a>
Reactivity	Rat
Clonality	Monoclonal
<b>Other Names</b>	
cAMP responsive element binding protein 1; CREB1; CREB-1	

Isotype	Rabbit IgG
Host	Rabbit
Calculated MW	35136 Da

**Phospho-Creb (S133) Antibody - Additional Information**

Dilution	WB~~1:1000 IHC~~1:100~500 FC~~1:10~50 ICC~~N/A IP~~N/A
Purification	Affinity-chromatography
Immunogen	A synthesized peptide derived from human Phospho-Creb (S133)
Description	This gene encodes a transcription factor that is a member of the leucine zipper family of DNA binding proteins. This protein binds as a homodimer to the cAMP-responsive element, an octameric palindrome.
Storage Condition and Buffer	Rabbit IgG in phosphate buffered saline , pH 7.4, 150mM NaCl, 0.02% sodium azide and 50% glycerol. Store at +4°C short term. Store at -20°C long term. Avoid freeze / thaw cycle.

**Phospho-Creb (S133) Antibody - Protein Information****Name** CREB1**Function**

Phosphorylation-dependent transcription factor that stimulates transcription upon binding to the DNA cAMP response element (CRE), a sequence present in many viral and cellular promoters (By similarity). Transcription activation is enhanced by the TORC coactivators which act independently of Ser-119 phosphorylation (PubMed:<a href="http://www.uniprot.org/citations/14536081" target="\_blank">14536081</a>). Involved in different cellular processes including the

synchronization of circadian rhythmicity and the differentiation of adipose cells (By similarity).  
Regulates the expression of apoptotic and inflammatory response factors in cardiomyocytes in response to ERFE-mediated activation of AKT signaling (By similarity).

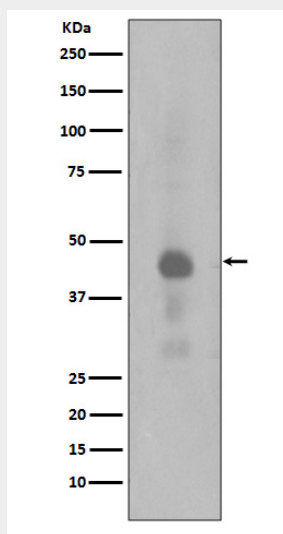
**Cellular Location**

Nucleus {ECO:0000255|PROSITE-ProRule:PRU00312, ECO:0000255|PROSITE-ProRule:PRU00978, ECO:0000269|PubMed:12552083}

**Phospho-Creb (S133) Antibody - Protocols**

Provided below are standard protocols that you may find useful for product applications.

- [Western Blot](#)
- [Blocking Peptides](#)
- [Dot Blot](#)
- [Immunohistochemistry](#)
- [Immunofluorescence](#)
- [Immunoprecipitation](#)
- [Flow Cytometry](#)
- [Cell Culture](#)

**Phospho-Creb (S133) Antibody - Images**

Western blot analysis of Phospho-Creb(Ser133) expression in HeLa cell lysates treated with Calyculin A.