

**Phospho-LAT (Y220) Antibody**  
**Rabbit mAb**  
**Catalog # AP90121****Specification**

---

**Phospho-LAT (Y220) Antibody - Product Information**

Application	WB, IHC, ICC, IP
Primary Accession	<a href="#">O43561</a>
Reactivity	Rat
Clonality	Monoclonal

**Other Names**

36 kDa phospho-tyrosine adaptor protein; LAT1; lat; pp36

Isotype	Rabbit IgG
Host	Rabbit
Calculated MW	27930 Da

**Phospho-LAT (Y220) Antibody - Additional Information**

Dilution	WB~~1:1000 IHC~~1:100~500 ICC~~N/A IP~~N/A
Purification	Affinity-chromatography
Immunogen	A synthesized peptide derived from human Phospho-LAT (Y220)
Description	Required for TCR (T-cell antigen receptor)- and pre-TCR-mediated signaling, both in mature T-cells and during their development. Involved in FCGR3 (low affinity immunoglobulin gamma Fc region receptor III)-mediated signaling in natural killer cells and FCER1 (high affinity immunoglobulin epsilon receptor)-mediated signaling in mast cells. Couples activation of these receptors and their associated kinases with distal intracellular events such as mobilization of intracellular calcium stores, PKC activation, MAPK activation or cytoskeletal reorganization through the recruitment of PLCG1, GRB2, GRAP2, and other signaling molecules.
Storage Condition and Buffer	Rabbit IgG in phosphate buffered saline , pH 7.4, 150mM NaCl, 0.02% sodium azide and 50% glycerol. Store at +4°C short term. Store at -20°C long term. Avoid freeze / thaw cycle.

**Phospho-LAT (Y220) Antibody - Protein Information**

**Name** LAT**Function**

Required for TCR (T-cell antigen receptor)- and pre-TCR- mediated signaling, both in mature T-cells and during their development (PubMed:<a href="http://www.uniprot.org/citations/23514740" target="\_blank">23514740</a>, PubMed:<a href="http://www.uniprot.org/citations/25907557" target="\_blank">25907557</a>). Involved in FCGR3 (low affinity immunoglobulin gamma Fc region receptor III)-mediated signaling in natural killer cells and FCER1 (high affinity immunoglobulin epsilon receptor)-mediated signaling in mast cells. Couples activation of these receptors and their associated kinases with distal intracellular events such as mobilization of intracellular calcium stores, PKC activation, MAPK activation or cytoskeletal reorganization through the recruitment of PLCG1, GRB2, GRAP2, and other signaling molecules.

**Cellular Location**

Cell membrane; Single-pass type III membrane protein. Note=Present in lipid rafts

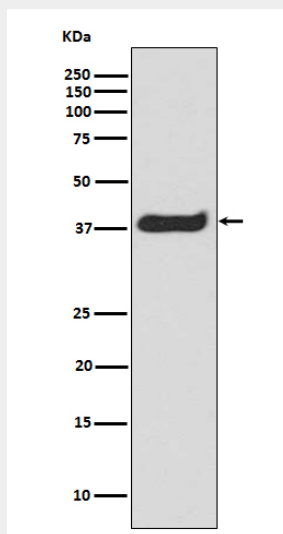
**Tissue Location**

Expressed in thymus, T-cells, NK cells, mast cells and, at lower levels, in spleen. Present in T-cells but not B-cells (at protein level).

**Phospho-LAT (Y220) Antibody - Protocols**

Provided below are standard protocols that you may find useful for product applications.

- [Western Blot](#)
- [Blocking Peptides](#)
- [Dot Blot](#)
- [Immunohistochemistry](#)
- [Immunofluorescence](#)
- [Immunoprecipitation](#)
- [Flow Cytometry](#)
- [Cell Culture](#)

**Phospho-LAT (Y220) Antibody - Images**

Western blot analysis of Phospho-LAT (Y220) in Jurkat cell treated with CD3 lysate.