

**STAT5a Antibody**  
**Rabbit mAb**  
**Catalog # AP90122****Specification**

---

**STAT5a Antibody - Product Information**

Application	WB, IHC, FC, ICC, IP
Primary Accession	<a href="#">P42229</a>
Reactivity	Rat
Clonality	Monoclonal
<b>Other Names</b>	
MGF; MPF; Mammary gland factor; STA5A; STAT5; STAT5A	

Isotype	Rabbit IgG
Host	Rabbit
Calculated MW	90647 Da

**STAT5a Antibody - Additional Information**

Purification	Affinity-chromatography
Immunogen	A synthesized peptide derived from human STAT5a
Description	The protein encoded by this gene is a member of the STAT family of transcription factors. In response to cytokines and growth factors, STAT family members are phosphorylated by the receptor associated kinases, and then form homo- or heterodimers that translocate to the cell nucleus where they act as transcription activators.
Storage Condition and Buffer	Rabbit IgG in phosphate buffered saline , pH 7.4, 150mM NaCl, 0.02% sodium azide and 50% glycerol. Store at +4°C short term. Store at -20°C long term. Avoid freeze / thaw cycle.

**STAT5a Antibody - Protein Information****Name** STAT5A**Synonyms** STAT5**Function**

Carries out a dual function: signal transduction and activation of transcription. Mediates cellular responses to the cytokine KITLG/SCF and other growth factors. Mediates cellular responses to ERBB4. May mediate cellular responses to activated FGFR1, FGFR2, FGFR3 and FGFR4. Binds to the GAS element and activates PRL- induced transcription. Regulates the expression of milk proteins during lactation.

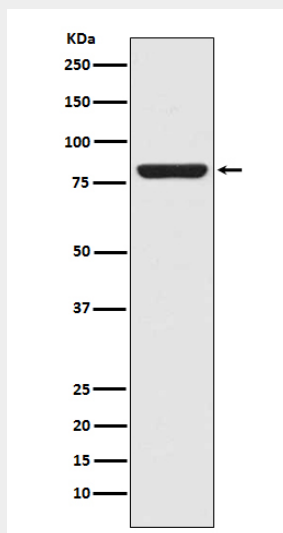
**Cellular Location**

Cytoplasm. Nucleus. Note=Translocated into the nucleus in response to phosphorylation

**STAT5a Antibody - Protocols**

Provided below are standard protocols that you may find useful for product applications.

- [Western Blot](#)
- [Blocking Peptides](#)
- [Dot Blot](#)
- [Immunohistochemistry](#)
- [Immunofluorescence](#)
- [Immunoprecipitation](#)
- [Flow Cytometry](#)
- [Cell Culture](#)

**STAT5a Antibody - Images**

Western blot analysis of STAT5a in A431 cell lysate.