

Liver Arginase Antibody
Rabbit mAb
Catalog # AP90134**Specification**

Liver Arginase Antibody - Product Information

Application	WB, IHC, ICC, IP
Primary Accession	P05089
Clonality	Monoclonal
Other Names	
ARG1; Type I arginase; Arginase-1; Liver-type arginase;	

Isotype	Rabbit IgG
Host	Rabbit
Calculated MW	34735 Da

Liver Arginase Antibody - Additional Information

Dilution	WB~~1:1000 IHC~~1:100~500 ICC~~N/A IP~~N/A
Purification	Affinity-chromatography
Immunogen	A synthesized peptide derived from human Liver Arginase
Description	Arginase catalyzes the hydrolysis of arginine to ornithine and urea. At least two isoforms of mammalian arginase exist (types I and II) which differ in their tissue distribution, subcellular localization, immunologic crossreactivity and physiologic function. The type I isoform encoded by this gene, is a cytosolic enzyme and expressed predominantly in the liver as a component of the urea cycle. Inherited deficiency of this enzyme results in argininemia, an autosomal recessive disorder characterized by hyperammonemia.
Storage Condition and Buffer	Rabbit IgG in phosphate buffered saline , pH 7.4, 150mM NaCl, 0.02% sodium azide and 50% glycerol. Store at +4°C short term. Store at -20°C long term. Avoid freeze / thaw cycle.

Liver Arginase Antibody - Protein Information**Name** ARG1

Function

Key element of the urea cycle converting L-arginine to urea and L-ornithine, which is further metabolized into metabolites proline and polyamides that drive collagen synthesis and bioenergetic pathways critical for cell proliferation, respectively; the urea cycle takes place primarily in the liver and, to a lesser extent, in the kidneys.

Cellular Location

Cytoplasm. Cytoplasmic granule. Note=Localized in azurophil granules of neutrophils (PubMed:15546957)

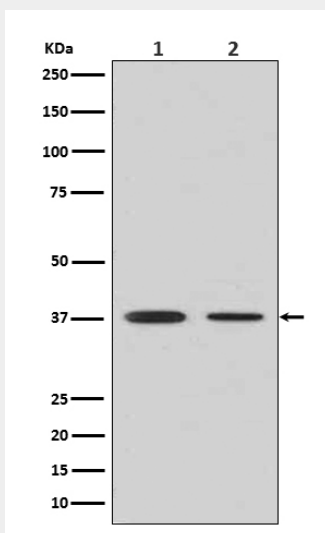
Tissue Location

Within the immune system initially reported to be selectively expressed in granulocytes (polymorphonuclear leukocytes [PMNs]) (PubMed:15546957). Also detected in macrophages mycobacterial granulomas (PubMed:23749634). Expressed in group2 innate lymphoid cells (ILC2s) during lung disease (PubMed:27043409)

Liver Arginase Antibody - Protocols

Provided below are standard protocols that you may find useful for product applications.

- [Western Blot](#)
- [Blocking Peptides](#)
- [Dot Blot](#)
- [Immunohistochemistry](#)
- [Immunofluorescence](#)
- [Immunoprecipitation](#)
- [Flow Cytometry](#)
- [Cell Culture](#)

Liver Arginase Antibody - Images

Western blot analysis of Liver Arginase in (1) Human fetal liver lysate; (2) Human fetal lung lysate.