

RNF20 Antibody
Rabbit mAb
Catalog # AP90137

Specification

RNF20 Antibody - Product Information

| | |
|--------------------------------------|------------------------|
| Application | WB, FC, ICC, IP |
| Primary Accession | Q5VTR2 |
| Reactivity | Human, Mouse |
| Clonality | Monoclonal |
| Other Names | |
| RING finger protein 20; BRE1A;RNF20; | |

| | |
|---------------|------------|
| Isotype | Rabbit IgG |
| Host | Rabbit |
| Calculated MW | 113662 Da |

RNF20 Antibody - Additional Information

| | |
|------------------------------|--|
| Dilution | WB~~1:1000 FC~~1:10~50 ICC~~N/A IP~~N/A |
| Purification | Affinity-chromatography |
| Immunogen | A synthesized peptide derived from human RNF20 |
| Description | Component of the RNF20/40 E3 ubiquitin-protein ligase complex that mediates monoubiquitination of 'Lys-120' of histone H2B (H2BK120ub1). H2BK120ub1 gives a specific tag for epigenetic transcriptional activation and is also prerequisite for histone H3 'Lys-4' and 'Lys-79' methylation (H3K4me and H3K79me, respectively). It thereby plays a central role in histone code and gene regulation. |
| Storage Condition and Buffer | Rabbit IgG in phosphate buffered saline , pH 7.4, 150mM NaCl, 0.02% sodium azide and 50% glycerol. Store at +4°C short term. Store at -20°C long term. Avoid freeze / thaw cycle. |

RNF20 Antibody - Protein Information

Name RNF20

Synonyms BRE1A

Function

Component of the RNF20/40 E3 ubiquitin-protein ligase complex that mediates monoubiquitination of 'Lys-120' of histone H2B (H2BK120ub1). H2BK120ub1 gives a specific tag for epigenetic transcriptional activation and is also prerequisite for histone H3 'Lys-4' and 'Lys-79' methylation (H3K4me and H3K79me, respectively). It thereby plays a central role in histone code and gene regulation. The RNF20/40 complex forms a H2B ubiquitin ligase complex in cooperation with the E2 enzyme UBE2A or UBE2B; reports about the cooperation with UBE2E1/UBCH are contradictory. Required for transcriptional activation of Hox genes. Recruited to the MDM2 promoter, probably by being recruited by p53/TP53, and thereby acts as a transcriptional coactivator. Mediates the polyubiquitination of isoform 2 of PA2G4 in cancer cells leading to its proteasome-mediated degradation.

Cellular Location

Nucleus

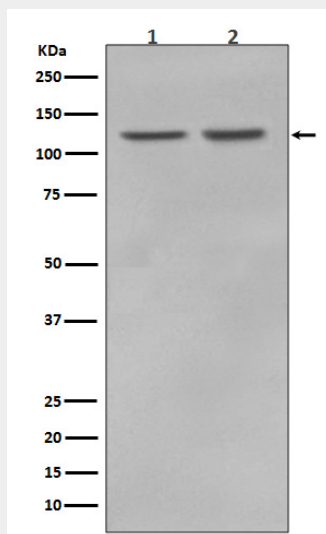
Tissue Location

Expressed in the normal brain and also in malignant gliomas (at protein level).

RNF20 Antibody - Protocols

Provided below are standard protocols that you may find useful for product applications.

- [Western Blot](#)
- [Blocking Peptides](#)
- [Dot Blot](#)
- [Immunohistochemistry](#)
- [Immunofluorescence](#)
- [Immunoprecipitation](#)
- [Flow Cytometry](#)
- [Cell Culture](#)

RNF20 Antibody - Images

Western blot analysis of RNF20 in (1) MCF7 cell lysate; (2) HeLa cell lysate.