

Sonic Hedgehog Antibody
Rabbit mAb
Catalog # AP90139**Specification**

Sonic Hedgehog Antibody - Product Information

Application	WB, IHC, FC, ICC
Primary Accession	Q15465
Clonality	Monoclonal
Other Names	
TPT; HHG1; HLP3; HPE3; SMMCI; TPTPS; MCOPCB5; Sonic Hedgehog;	
Isotype	Rabbit IgG
Host	Rabbit
Calculated MW	49607 Da

Sonic Hedgehog Antibody - Additional Information

Dilution	WB~~1:1000 IHC~~1:100~500 FC~~1:10~50 ICC~~N/A
Purification	Affinity-chromatography
Immunogen	A synthesized peptide derived from human Sonic Hedgehog
Description	This gene encodes a protein that is instrumental in patterning the early embryo. It has been implicated as the key inductive signal in patterning of the ventral neural tube, the anterior-posterior limb axis, and the ventral somites. Of three human proteins showing sequence and functional similarity to the sonic hedgehog protein of Drosophila, this protein is the most similar.
Storage Condition and Buffer	Rabbit IgG in phosphate buffered saline , pH 7.4, 150mM NaCl, 0.02% sodium azide and 50% glycerol. Store at +4°C short term. Store at -20°C long term. Avoid freeze / thaw cycle.

Sonic Hedgehog Antibody - Protein Information**Name** SHH ([HGNC:10848](#))**Function**

[Sonic hedgehog protein]: The C-terminal part of the sonic hedgehog protein precursor displays an autoproteolysis and a cholesterol transferase activity (By similarity). Both activities result in the cleavage of the full-length protein into two parts (ShhN and ShhC) followed by the covalent

attachment of a cholesterol moiety to the C-terminal of the newly generated ShhN (By similarity). Both activities occur in the endoplasmic reticulum (By similarity). Once cleaved, ShhC is degraded in the endoplasmic reticulum (By similarity).

Cellular Location

[Sonic hedgehog protein]: Endoplasmic reticulum membrane. Golgi apparatus membrane.

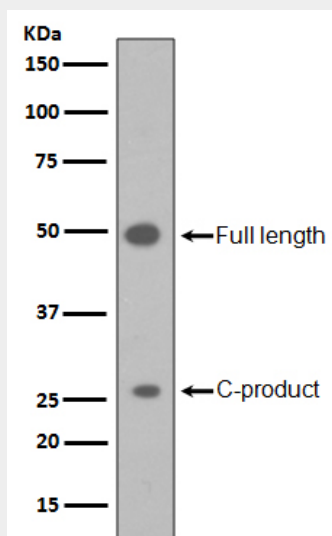
Secreted Note=Co-localizes with HHAT in the ER and Golgi membrane

Sonic Hedgehog Antibody - Protocols

Provided below are standard protocols that you may find useful for product applications.

- [Western Blot](#)
- [Blocking Peptides](#)
- [Dot Blot](#)
- [Immunohistochemistry](#)
- [Immunofluorescence](#)
- [Immunoprecipitation](#)
- [Flow Cytometry](#)
- [Cell Culture](#)

Sonic Hedgehog Antibody - Images



Western blot analysis of Sonic Hedgehog in HepG2 cell lysate.