

PTBP2 Antibody
Rabbit mAb
Catalog # AP90140**Specification**

PTBP2 Antibody - Product Information

Application	WB, IHC, ICC
Primary Accession	Q9UKA9
Reactivity	Rat
Clonality	Monoclonal
Other Names	
brPTB; MIBP; nPTB; Polypyrimidine tract binding protein 2; PTB like protein; PTBP 2Ptbp2; Splicing regulator;	
Isotype	Rabbit IgG
Host	Rabbit
Calculated MW	57491 Da

PTBP2 Antibody - Additional Information

Purification	Affinity-chromatography
Immunogen	A synthesized peptide derived from human PTBP2
Description	RNA-binding protein which binds to intronic polypyrimidine tracts and mediates negative regulation of exons splicing. May antagonize in a tissue-specific manner the ability of NOVA1 to activate exon selection. In addition to its function in pre-mRNA splicing, plays also a role in the regulation of translation. Isoform 5 has a reduced affinity for RNA.
Storage Condition and Buffer	Rabbit IgG in phosphate buffered saline , pH 7.4, 150mM NaCl, 0.02% sodium azide and 50% glycerol. Store at +4°C short term. Store at -20°C long term. Avoid freeze / thaw cycle.

PTBP2 Antibody - Protein Information**Name** PTBP2 ([HGNC:17662](#))**Synonyms** NPTB, PTB, PTBLP**Function**

RNA-binding protein which binds to intronic polypyrimidine tracts and mediates negative regulation of exons splicing. May antagonize in a tissue-specific manner the ability of NOVA1 to activate exon selection. In addition to its function in pre-mRNA splicing, plays also a role in the regulation of translation.

Cellular Location

Nucleus {ECO:0000250|UniProtKB:Q91Z31}.

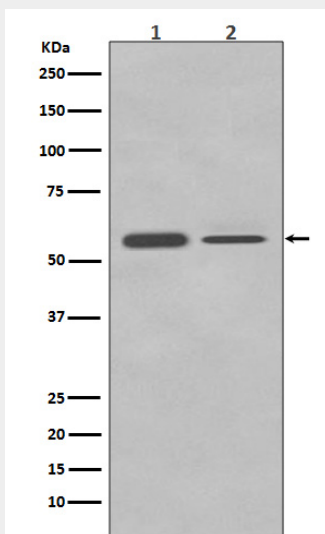
Tissue Location

Mainly expressed in brain although also detected in other tissues like heart and skeletal muscle. Isoform 1 and isoform 2 are specifically expressed in neuronal tissues. Isoform 3 and isoform 4 are expressed in non-neuronal tissues. Isoform 5 and isoform 6 are truncated forms expressed in non-neuronal tissues

PTBP2 Antibody - Protocols

Provided below are standard protocols that you may find useful for product applications.

- [Western Blot](#)
- [Blocking Peptides](#)
- [Dot Blot](#)
- [Immunohistochemistry](#)
- [Immunofluorescence](#)
- [Immunoprecipitation](#)
- [Flow Cytometry](#)
- [Cell Culture](#)

PTBP2 Antibody - Images

Western blot analysis of PTBP2 in (1) Neuro-2a cell lysate; (2) HeLa cell lysate.