

ERG Antibody
Rabbit mAb
Catalog # AP90152**Specification**

ERG Antibody - Product Information

Application	WB, IHC, ICC
Primary Accession	P11308
Reactivity	Rat
Clonality	Monoclonal
Other Names	
ERG;erg-3;p55;KCNH2;	
Isotype	Rabbit IgG
Host	Rabbit
Calculated MW	53838 Da

ERG Antibody - Additional Information

Dilution	WB~~1:1000 IHC~~1:100~500 ICC~~N/A
Purification	Affinity-chromatography
Immunogen	A synthesized peptide derived from human ERG
Description	This gene encodes a member of the erythroblast transformation-specific (ETS) family of transcriptions factors. All members of this family are key regulators of embryonic development, cell proliferation, differentiation, angiogenesis, inflammation, and apoptosis. The protein encoded by this gene is mainly expressed in the nucleus. It contains an ETS DNA-binding domain and a PNT (pointed) domain which is implicated in the self-association of chimeric oncoproteins.
Storage Condition and Buffer	Rabbit IgG in phosphate buffered saline , pH 7.4, 150mM NaCl, 0.02% sodium azide and 50% glycerol. Store at +4°C short term. Store at -20°C long term. Avoid freeze / thaw cycle.

ERG Antibody - Protein Information**Name** ERG**Function**

Transcriptional regulator. May participate in transcriptional regulation through the recruitment of

SETDB1 histone methyltransferase and subsequent modification of local chromatin structure.

Cellular Location

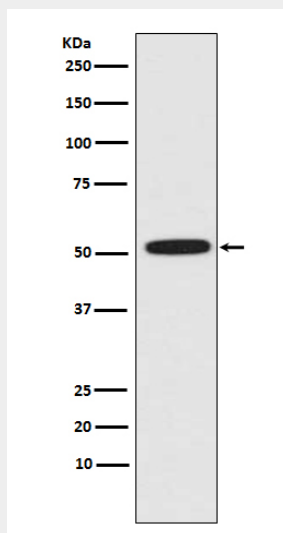
Nucleus {ECO:0000255|PROSITE-ProRule:PRU00237, ECO:0000269|PubMed:17289661}.

Cytoplasm Note=Localized in cytoplasmic mRNP granules containing untranslated mRNAs

ERG Antibody - Protocols

Provided below are standard protocols that you may find useful for product applications.

- [Western Blot](#)
- [Blocking Peptides](#)
- [Dot Blot](#)
- [Immunohistochemistry](#)
- [Immunofluorescence](#)
- [Immunoprecipitation](#)
- [Flow Cytometry](#)
- [Cell Culture](#)

ERG Antibody - Images

Western blot analysis of ERG expression in HeLa cell lysate.