

VEGF Antibody
Rabbit mAb
Catalog # AP90157**Specification**

VEGF Antibody - Product Information

Application	IHC, FC, ICC
Primary Accession	P15692
Clonality	Monoclonal
Other Names	
Vascular Endothelial Growth Factor; Vascular Permeability Factor; VEGF-A; VEGFA	
Isotype	Rabbit IgG
Host	Rabbit
Calculated MW	27042 Da

VEGF Antibody - Additional Information

Dilution	IHC~~1:100-1:200 FC~~1:10~50 ICC~~N/A
Purification	Affinity-chromatography
Immunogen	A synthesized peptide derived from human VEGF
Description	Growth factor active in angiogenesis, vasculogenesis and endothelial cell growth. Induces endothelial cell proliferation, promotes cell migration, inhibits apoptosis and induces permeabilization of blood vessels. Binds to the FLT1/VEGFR1 and KDR/VEGFR2 receptors, heparan sulfate and heparin.
Storage Condition and Buffer	Rabbit IgG in phosphate buffered saline , pH 7.4, 150mM NaCl, 0.02% sodium azide and 50% glycerol. Store at +4°C short term. Store at -20°C long term. Avoid freeze / thaw cycle.

VEGF Antibody - Protein Information**Name** VEGFA**Synonyms** VEGF**Function**

[N-VEGF]: Participates in the induction of key genes involved in the response to hypoxia and in the induction of angiogenesis such as HIF1A (PubMed:35455969). Involved in protecting cells from hypoxia- mediated cell death (By similarity).

Cellular Location

[N-VEGF]: Cytoplasm. Nucleus. Note=Cytoplasmic in normoxic conditions and localizes to the nucleus under hypoxic conditions [Isoform L-VEGF189]: Endoplasmic reticulum. Golgi apparatus. Secreted, extracellular space, extracellular matrix [Isoform VEGF165]: Secreted

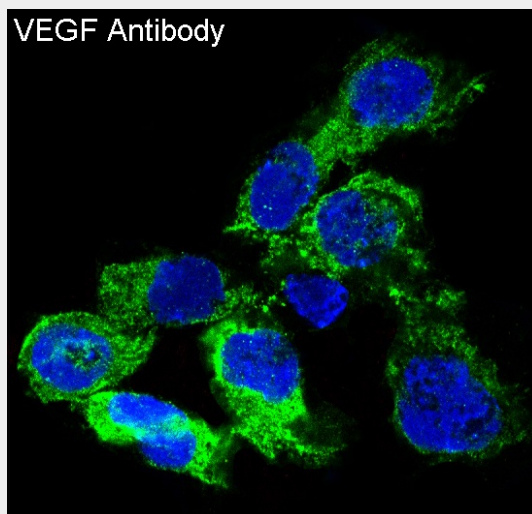
Tissue Location

Higher expression in pituitary tumors than the pituitary gland. [Isoform VEGF165]: Widely expressed. [Isoform VEGF206]: Not widely expressed.

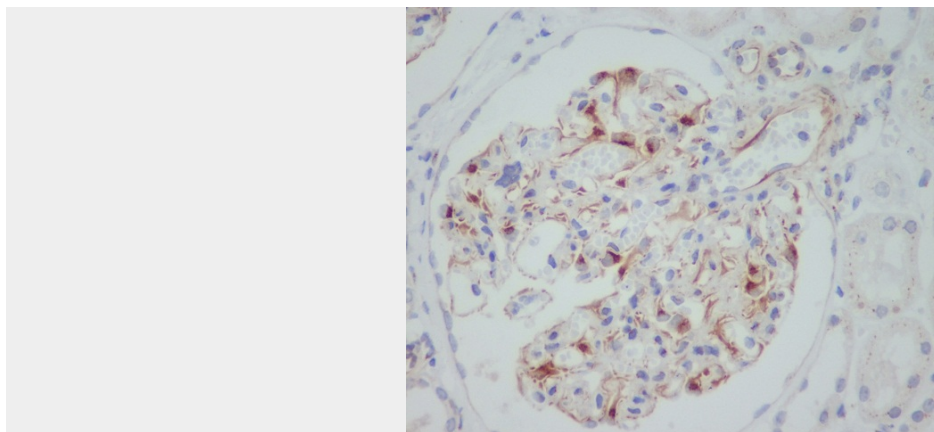
VEGF Antibody - Protocols

Provided below are standard protocols that you may find useful for product applications.

- [Western Blot](#)
- [Blocking Peptides](#)
- [Dot Blot](#)
- [Immunohistochemistry](#)
- [Immunofluorescence](#)
- [Immunoprecipitation](#)
- [Flow Cytometry](#)
- [Cell Culture](#)

VEGF Antibody - Images

Immunofluorescent analysis of HUVEC cells, using VEGF Antibody.



Immunohistochemical analysis of paraffin-embedded human kidney, using VEGF Antibody.