

Olig2 Antibody
Rabbit mAb
Catalog # AP90158**Specification**

Olig2 Antibody - Product Information

Application	WB, IHC, ICC
Primary Accession	Q13516
Reactivity	Rat
Clonality	Monoclonal
Other Names	
Oligo2; bHLHb1; Class E basic helix-loop-helix protein 19; bHLHe19; OLIG2; BHLHB1; BHLHE19; PRKC;	
Isotype	Rabbit IgG
Host	Rabbit
Calculated MW	32385 Da

Olig2 Antibody - Additional Information

Dilution	WB~~1:1000 IHC~~1:100~500 ICC~~N/A
Purification	Affinity-chromatography
Immunogen	A synthesized peptide derived from human Olig2
Description	Olig2 is required for oligodendrocyte and motor neuron specification in the spinal cord, as well as for the development of somatic motor neurons in the hindbrain. Cooperates with OLIG1 to establish the pMN domain of the embryonic neural tube. Antagonist of V2 interneuron and of NKX2-2-induced V3 interneuron development.
Storage Condition and Buffer	Rabbit IgG in phosphate buffered saline , pH 7.4, 150mM NaCl, 0.02% sodium azide and 50% glycerol. Store at +4°C short term. Store at -20°C long term. Avoid freeze / thaw cycle.

Olig2 Antibody - Protein Information**Name** OLIG2**Synonyms** BHLHB1, BHLHE19, PRKCBP2, RACK17**Function**

Required for oligodendrocyte and motor neuron specification in the spinal cord, as well as for the

development of somatic motor neurons in the hindbrain. Functions together with ZNF488 to promote oligodendrocyte differentiation. Cooperates with OLIG1 to establish the pMN domain of the embryonic neural tube. Antagonist of V2 interneuron and of NKX2-2-induced V3 interneuron development.

Cellular Location

Nucleus {ECO:0000255|PROSITE-ProRule:PRU00981}. Cytoplasm. Note=The NLS contained in the bHLH domain could be masked in the native form and translocation to the nucleus could be mediated by interaction either with class E bHLH partner protein or with NKX2-2.

Tissue Location

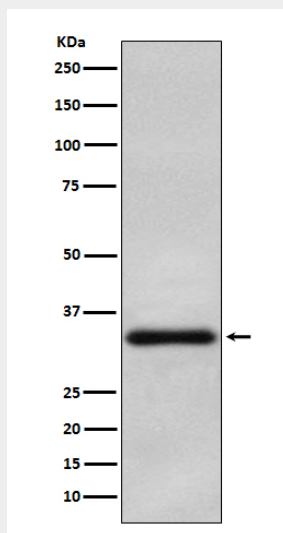
Expressed in the brain, in oligodendrocytes. Strongly expressed in oligodendrogliomas, while expression is weak to moderate in astrocytomas. Expression in glioblastomas highly variable

Olig2 Antibody - Protocols

Provided below are standard protocols that you may find useful for product applications.

- [Western Blot](#)
- [Blocking Peptides](#)
- [Dot Blot](#)
- [Immunohistochemistry](#)
- [Immunofluorescence](#)
- [Immunoprecipitation](#)
- [Flow Cytometry](#)
- [Cell Culture](#)

Olig2 Antibody - Images



Western blot analysis of Olig2 in Human oligodendroglioma lysate.