

**HIF-2 alpha Antibody**  
**Rabbit mAb**  
**Catalog # AP90159**

## Specification

---

### HIF-2 alpha Antibody - Product Information

Application	WB, FC, ICC
Primary Accession	<a href="#">Q99814</a>
Reactivity	Rat
Clonality	Monoclonal

**Other Names**

bHLHe73;ECYT4;EPAS 1;EPAS1;HIF2A;HLF;MOP 2;PASD2

Isotype	Rabbit IgG
Host	Rabbit
Calculated MW	96459 Da

### HIF-2 alpha Antibody - Additional Information

Dilution	WB~~1:1000 FC~~1:10~50 ICC~~N/A
Purification	Affinity-chromatography
Immunogen	A synthesized peptide derived from human HIF-2 alpha
Description	Transcription factor involved in the induction of oxygen regulated genes. Binds to core DNA sequence 5'-[AG]CGTG-3' within the hypoxia response element (HRE) of target gene promoters. Regulates the vascular endothelial growth factor (VEGF) expression and seems to be implicated in the development of blood vessels and the tubular system of lung. May also play a role in the formation of the endothelium that gives rise to the blood brain barrier.
Storage Condition and Buffer	Rabbit IgG in phosphate buffered saline , pH 7.4, 150mM NaCl, 0.02% sodium azide and 50% glycerol. Store at +4°C short term. Store at -20°C long term. Avoid freeze / thaw cycle.

### HIF-2 alpha Antibody - Protein Information

**Name** EPAS1

**Synonyms** BHLHE73, HIF2A, MOP2, PASD2

**Function**

Transcription factor involved in the induction of oxygen regulated genes. Heterodimerizes with ARNT; heterodimer binds to core DNA sequence 5'-TACGTG-3' within the hypoxia response element (HRE) of target gene promoters (By similarity). Regulates the vascular endothelial growth factor (VEGF) expression and seems to be implicated in the development of blood vessels and the tubular system of lung. May also play a role in the formation of the endothelium that gives rise to the blood brain barrier. Potent activator of the Tie-2 tyrosine kinase expression. Activation requires recruitment of transcriptional coactivators such as CREBBP and probably EP300. Interaction with redox regulatory protein APEX1 seems to activate CTAD (By similarity).

#### Cellular Location

Nucleus {ECO:0000250|UniProtKB:P97481, ECO:0000255|PROSITE-ProRule:PRU00981}. Nucleus speckle {ECO:0000250|UniProtKB:P97481}. Note=Colocalizes with HIF3A in the nucleus and speckles. {ECO:0000250|UniProtKB:P97481}

#### Tissue Location

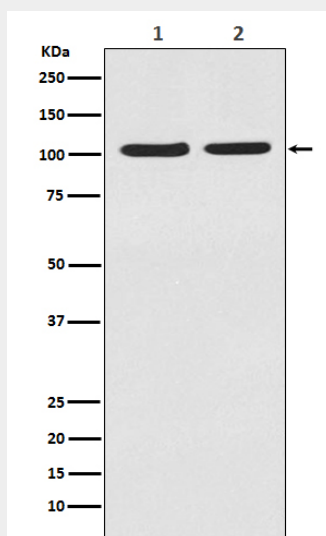
Expressed in most tissues, with highest levels in placenta, lung and heart. Selectively expressed in endothelial cells

### HIF-2 alpha Antibody - Protocols

Provided below are standard protocols that you may find useful for product applications.

- [Western Blot](#)
- [Blocking Peptides](#)
- [Dot Blot](#)
- [Immunohistochemistry](#)
- [Immunofluorescence](#)
- [Immunoprecipitation](#)
- [Flow Cytometry](#)
- [Cell Culture](#)

### HIF-2 alpha Antibody - Images



Western blot analysis of HIF-2 alpha in (1)MCF-7 cell lysate;(2)HeLa cell lysate.