

Plectin Antibody
Rabbit mAb
Catalog # AP90180**Specification**

Plectin Antibody - Product Information

Application	WB, IHC, IP
Primary Accession	Q15149
Reactivity	Rat
Clonality	Monoclonal
Other Names	
EBS1; EBSO; HD1; Hemidesmosomal protein 1; PCN; pleC; PLEC1 ;Plectin 1; Plectin 6; Plectin; PLTN	
Isotype	Rabbit IgG
Host	Rabbit
Calculated MW	531791 Da

Plectin Antibody - Additional Information

Dilution	WB~~1:1000 IHC~~1:100~500 IP~~N/A
Purification	Affinity-chromatography
Immunogen	A synthesized peptide derived from human Plectin
Description	Interlinks intermediate filaments with microtubules and microfilaments and anchors intermediate filaments to desmosomes or hemidesmosomes. Could also bind muscle proteins such as actin to membrane complexes in muscle. May be involved not only in the filaments network, but also in the regulation of their dynamics.
Storage Condition and Buffer	Rabbit IgG in phosphate buffered saline , pH 7.4, 150mM NaCl, 0.02% sodium azide and 50% glycerol. Store at +4°C short term. Store at -20°C long term. Avoid freeze / thaw cycle.

Plectin Antibody - Protein Information**Name** PLEC**Synonyms** PLEC1**Function**

Interlinks intermediate filaments with microtubules and microfilaments and anchors intermediate filaments to desmosomes or hemidesmosomes. Could also bind muscle proteins such as actin to

membrane complexes in muscle. May be involved not only in the filaments network, but also in the regulation of their dynamics. Structural component of muscle. Isoform 9 plays a major role in the maintenance of myofiber integrity.

Cellular Location

Cytoplasm, cytoskeleton. Cell junction, hemidesmosome. Cell projection, podosome
{ECO:0000250|UniProtKB:Q9QXS1}. Note=Localized to the cortex of myotube podosomes.
{ECO:0000250|UniProtKB:Q9QXS1}

Tissue Location

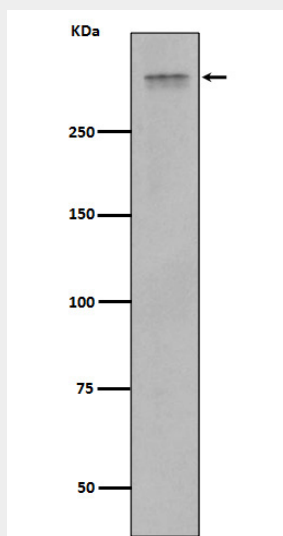
Widely expressed with highest levels in muscle, heart, placenta and spinal cord

Plectin Antibody - Protocols

Provided below are standard protocols that you may find useful for product applications.

- [Western Blot](#)
- [Blocking Peptides](#)
- [Dot Blot](#)
- [Immunohistochemistry](#)
- [Immunofluorescence](#)
- [Immunoprecipitation](#)
- [Flow Cytometry](#)
- [Cell Culture](#)

Plectin Antibody - Images



Western blot analysis of Plectin expression in Jurkat cell lysate.