

TACC3 Antibody
Rabbit mAb
Catalog # AP90191**Specification**

TACC3 Antibody - Product Information

Application	WB, IHC, ICC
Primary Accession	O9Y6A5
Reactivity	Rat
Clonality	Monoclonal
Other Names	
ERIC-1; ERIC1; TAC3; Transforming acidic coiled-coil-containing protein 3;TACC3;	
Isotype	Rabbit IgG
Host	Rabbit
Calculated MW	90360 Da

TACC3 Antibody - Additional Information

Purification	Affinity-chromatography
Immunogen	A synthesized peptide derived from human TACC3
Description	TACC family members, TACC1, TACC2, and TACC3, map very closely to the corresponding FGFR1, FGFR2, FGFR3 genes on chromosomes 4,8, and 10. Subsequently, since they are phylogenetically related, it is proposed that TACC and FGFR have similar roles in cell growth and differentiation.
Storage Condition and Buffer	Rabbit IgG in phosphate buffered saline , pH 7.4, 150mM NaCl, 0.02% sodium azide and 50% glycerol. Store at +4°C short term. Store at -20°C long term. Avoid freeze / thaw cycle.

TACC3 Antibody - Protein Information**Name** TACC3**Synonyms** ERIC1**Function**

Plays a role in the microtubule-dependent coupling of the nucleus and the centrosome. Involved in the processes that regulate centrosome-mediated interkinetic nuclear migration (INM) of neural progenitors (By similarity). Acts as a component of the TACC3/ch-TOG/clathrin complex proposed to contribute to stabilization of kinetochore fibers of the mitotic spindle by acting as inter-microtubule bridge. The TACC3/ch-TOG/clathrin complex is required for the maintenance of kinetochore fiber tension (PubMed:<a href="http://www.uniprot.org/citations/21297582"

target="_blank">21297582, PubMed:23532825). May be involved in the control of cell growth and differentiation. May contribute to cancer (PubMed:14767476).

Cellular Location

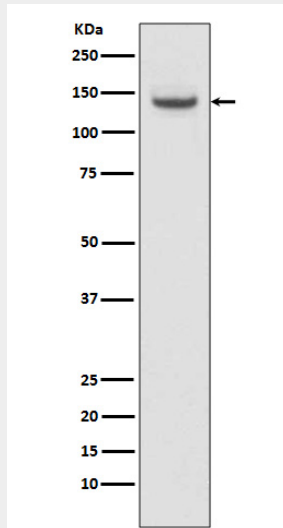
Cytoplasm. Cytoplasm, cytoskeleton, microtubule organizing center, centrosome. Cytoplasm, cytoskeleton, spindle. Cytoplasm, cytoskeleton, spindle pole {ECO:0000250|UniProtKB:Q9PTG8}. Note=In complex with CKAP5 localized to microtubule plus-ends in mitosis and interphase. In complex with CKAP5 and clathrin localized to inter-microtubule bridges in mitotic spindles.

TACC3 Antibody - Protocols

Provided below are standard protocols that you may find useful for product applications.

- [Western Blot](#)
- [Blocking Peptides](#)
- [Dot Blot](#)
- [Immunohistochemistry](#)
- [Immunofluorescence](#)
- [Immunoprecipitation](#)
- [Flow Cytometry](#)
- [Cell Culture](#)

TACC3 Antibody - Images



Western blot analysis of TACC3 expression in C6 cell lysate.