

**CCL19 Antibody**  
**Rabbit mAb**  
**Catalog # AP90201****Specification**

---

**CCL19 Antibody - Product Information**

Application	<b>WB</b>
Primary Accession	<a href="#"><u>Q99731</u></a>
Clonality	<b>Monoclonal</b>
<b>Other Names</b>	
CCL 19;CK beta 11;EBI 1 ligand chemokine;ELC;Exodus3;;MIP3 beta;SCYA 19;SCYA19	
Isotype	<b>Rabbit IgG</b>
Host	<b>Rabbit</b>
Calculated MW	<b>10993 Da</b>

**CCL19 Antibody - Additional Information**

Dilution	<b>WB~~1:1000</b>
Purification	<b>Affinity-chromatography</b>
Immunogen	<b>A synthesized peptide derived from human CCL19</b>
Description	<b>May play a role not only in inflammatory and immunological responses but also in normal lymphocyte recirculation and homing. May play an important role in trafficking of T-cells in thymus, and T-cell and B-cell migration to secondary lymphoid organs. Binds to chemokine receptor CCR7. Recombinant CCL19 shows potent chemotactic activity for T-cells and B-cells but not for granulocytes and monocytes.</b>
Storage Condition and Buffer	<b>Rabbit IgG in phosphate buffered saline , pH 7.4, 150mM NaCl, 0.02% sodium azide and 50% glycerol. Store at +4°C short term. Store at -20°C long term. Avoid freeze / thaw cycle.</b>

**CCL19 Antibody - Protein Information****Name** CCL19**Synonyms** ELC, MIP3B, SCYA19**Function**

May play a role not only in inflammatory and immunological responses but also in normal lymphocyte recirculation and homing. May play an important role in trafficking of T-cells in thymus, and T-cell and B-cell migration to secondary lymphoid organs. Binds to chemokine receptor CCR7. Recombinant CCL19 shows potent chemotactic activity for T-cells and B-cells but

not for granulocytes and monocytes. Binds to atypical chemokine receptor ACKR4 and mediates the recruitment of beta- arrestin (ARRB1/2) to ACKR4.

#### Cellular Location

Secreted.

#### Tissue Location

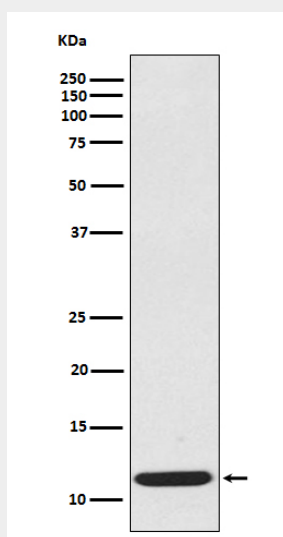
Expressed at high levels in the lymph nodes, thymus and appendix. Intermediate levels seen in colon and trachea, while low levels found in spleen, small intestine, lung, kidney and stomach

### CCL19 Antibody - Protocols

Provided below are standard protocols that you may find useful for product applications.

- [Western Blot](#)
- [Blocking Peptides](#)
- [Dot Blot](#)
- [Immunohistochemistry](#)
- [Immunofluorescence](#)
- [Immunoprecipitation](#)
- [Flow Cytometry](#)
- [Cell Culture](#)

### CCL19 Antibody - Images



Western blot analysis of extracts from CCL19 recombinant protein, using CCL19 antibody.