

KDEL Antibody
Rabbit mAb
Catalog # AP90207**Specification**

KDEL Antibody - Product Information

Application	WB, IHC, FC, ICC
Primary Accession	P24390
Reactivity	Rat
Clonality	Monoclonal
Other Names	
KDEL; Lys Asp Glu Leu;	

Isotype	Rabbit IgG
Host	Rabbit
Calculated MW	24542 Da

KDEL Antibody - Additional Information

Dilution	WB~~1:1000 IHC~~1:100~500 FC~~1:10~50 ICC~~N/A
Purification	Affinity-chromatography
Immunogen	A synthesized peptide derived from human KDEL
Description	This receptor recognizes K-D-E-L. The sequence Lys-Asp-Glu-Leu (KDEL) or a closely related sequence, is present at the carboxy-terminus of soluble endoplasmic reticulum (ER) resident proteins and some membrane proteins. Determines the specificity of the luminal ER protein retention system. Required for the retention of luminal endoplasmic reticulum proteins. Determines the specificity of the luminal ER protein retention system. Also required for normal vesicular traffic through the Golgi.
Storage Condition and Buffer	Rabbit IgG in phosphate buffered saline , pH 7.4, 150mM NaCl, 0.02% sodium azide and 50% glycerol. Store at +4°C short term. Store at -20°C long term. Avoid freeze / thaw cycle.

KDEL Antibody - Protein Information**Name** KDELRL1

Synonyms ERD2.1**Function**

Receptor for the C-terminal sequence motif K-D-E-L that is present on endoplasmic reticulum resident proteins and that mediates their recycling from the Golgi back to the endoplasmic reticulum.

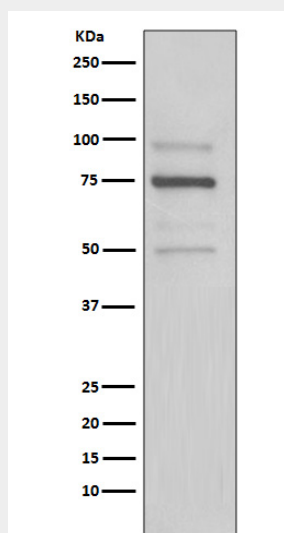
Cellular Location

Golgi apparatus membrane; Multi-pass membrane protein {ECO:0000250|UniProtKB:P33946}. Cytoplasmic vesicle, COPI-coated vesicle membrane; Multi-pass membrane protein {ECO:0000250|UniProtKB:P33946}. Endoplasmic reticulum membrane; Multi-pass membrane protein {ECO:0000250|UniProtKB:P33946}. Endoplasmic reticulum-Golgi intermediate compartment membrane {ECO:0000250|UniProtKB:P33946}; Multi-pass membrane protein {ECO:0000250|UniProtKB:P33946} Note=Localized in the Golgi in the absence of bound proteins with the sequence motif K-D-E-L. Trafficks back to the endoplasmic reticulum together with cargo proteins containing the sequence motif K-D-E-L

KDEL Antibody - Protocols

Provided below are standard protocols that you may find useful for product applications.

- [Western Blot](#)
- [Blocking Peptides](#)
- [Dot Blot](#)
- [Immunohistochemistry](#)
- [Immunofluorescence](#)
- [Immunoprecipitation](#)
- [Flow Cytometry](#)
- [Cell Culture](#)

KDEL Antibody - Images

Western blot analysis of KDEL expression in HeLa cell lysate.