

Actin (Alpha-Actin) Antibody
Rabbit mAb
Catalog # AP90211**Specification**

Actin (Alpha-Actin) Antibody - Product Information

Application	WB, IHC, FC, ICC, IP
Primary Accession	P68133
Reactivity	Rat
Clonality	Monoclonal
Other Names	
ACTA, ACTA1, ACTS, Actin, alpha skeletal muscle, Alpha-actin 1	
Isotype	Rabbit IgG
Host	Rabbit
Calculated MW	42051 Da

Actin (Alpha-Actin) Antibody - Additional Information

Dilution	WB~~1:1000 IHC~~1:100~500 FC~~1:10~50 ICC~~N/A IP~~N/A
Purification	Affinity-chromatography
Immunogen	A synthesized peptide derived from human Actin (Alpha-Actin)
Description	Actins are highly conserved proteins that are involved in various types of cell motility and are ubiquitously expressed in all eukaryotic cells.
Storage Condition and Buffer	Rabbit IgG in phosphate buffered saline , pH 7.4, 150mM NaCl, 0.02% sodium azide and 50% glycerol. Store at +4°C short term. Store at -20°C long term. Avoid freeze / thaw cycle.

Actin (Alpha-Actin) Antibody - Protein Information**Name** ACTA1**Synonyms** ACTA**Function**

Actins are highly conserved proteins that are involved in various types of cell motility and are ubiquitously expressed in all eukaryotic cells.

Cellular Location

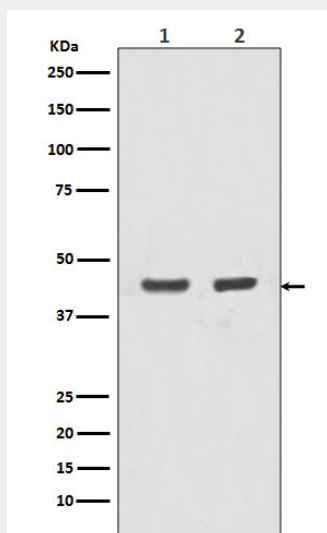
Cytoplasm, cytoskeleton.

Actin (Alpha-Actin) Antibody - Protocols

Provided below are standard protocols that you may find useful for product applications.

- [Western Blot](#)
- [Blocking Peptides](#)
- [Dot Blot](#)
- [Immunohistochemistry](#)
- [Immunofluorescence](#)
- [Immunoprecipitation](#)
- [Flow Cytometry](#)
- [Cell Culture](#)

Actin (Alpha-Actin) Antibody - Images



Western blot analysis of Actin (Alpha-Actin) expression in (1) A431 cell lysate; (2) MCF-7 cell lysate.