

IAP2 Antibody
Rabbit mAb
Catalog # AP90220**Specification**

IAP2 Antibody - Product Information

Application	WB, IHC, ICC, IP
Primary Accession	Q13489
Clonality	Monoclonal
Other Names	
AIP1; API2; BIRC3; CIAP2; HAIP1; IAP homolog C ;RNF49; MIHC; MALT2; Apoptosis inhibitor 2;IAP2;	
Isotype	Rabbit IgG
Host	Rabbit
Calculated MW	68372 Da

IAP2 Antibody - Additional Information

Dilution	WB~~1:1000 IHC~~1:100~500 ICC~~N/A IP~~N/A
Purification	Affinity-chromatography
Immunogen	A synthesized peptide derived from human IAP2
Description	Apoptotic suppressor. The BIR motifs region interacts with TNF receptor associated factors 1 and 2 (TRAF1 and TRAF2) to form an heteromeric complex, which is then recruited to the tumor necrosis factor receptor 2 (TNFR2).
Storage Condition and Buffer	Rabbit IgG in phosphate buffered saline , pH 7.4, 150mM NaCl, 0.02% sodium azide and 50% glycerol. Store at +4°C short term. Store at -20°C long term. Avoid freeze / thaw cycle.

IAP2 Antibody - Protein Information**Name** BIRC3**Synonyms** API2, MIHC, RNF49**Function**

Multi-functional protein which regulates not only caspases and apoptosis, but also modulates inflammatory signaling and immunity, mitogenic kinase signaling and cell proliferation, as well as cell invasion and metastasis. Acts as an E3 ubiquitin-protein ligase regulating NF-kappa-B signaling and regulates both canonical and non- canonical NF-kappa-B signaling by acting in opposite directions: acts as a positive regulator of the canonical pathway and suppresses constitutive

activation of non-canonical NF-kappa-B signaling. The target proteins for its E3 ubiquitin-protein ligase activity include: RIPK1, RIPK2, RIPK3, RIPK4, CASP3, CASP7, CASP8, IKBKE, TRAF1, and BCL10. Acts as an important regulator of innate immune signaling via regulation of Toll-like receptors (TLRs), Nodlike receptors (NLRs) and RIG-I like receptors (RLRs), collectively referred to as pattern recognition receptors (PRRs). Protects cells from spontaneous formation of the ripoptosome, a large multi-protein complex that has the capability to kill cancer cells in a caspase-dependent and caspase-independent manner. Suppresses ripoptosome formation by ubiquitinating RIPK1 and CASP8.

Cellular Location

Cytoplasm. Nucleus

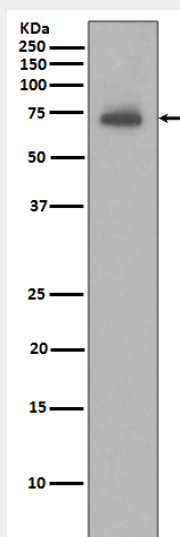
Tissue Location

Highly expressed in fetal lung, and kidney. In the adult, expression is mainly seen in lymphoid tissues, including spleen, thymus and peripheral blood lymphocytes

IAP2 Antibody - Protocols

Provided below are standard protocols that you may find useful for product applications.

- [Western Blot](#)
- [Blocking Peptides](#)
- [Dot Blot](#)
- [Immunohistochemistry](#)
- [Immunofluorescence](#)
- [Immunoprecipitation](#)
- [Flow Cytometry](#)
- [Cell Culture](#)

IAP2 Antibody - Images

Western blot analysis of IAP2 expression in Ramos cell lysate.