

CLGN Antibody (Center)
Affinity Purified Rabbit Polyclonal Antibody (Pab)
Catalog # AP9022c**Specification**

CLGN Antibody (Center) - Product Information

Application	FC, IHC-P, WB,E
Primary Accession	O14967
Reactivity	Human
Host	Rabbit
Clonality	Polyclonal
Isotype	Rabbit IgG
Antigen Region	309-336

CLGN Antibody (Center) - Additional Information**Gene ID** 1047**Other Names**

Calmegin, CLGN

Target/Specificity

This CLGN antibody is generated from rabbits immunized with a KLH conjugated synthetic peptide between 309-336 amino acids from the Central region of human CLGN.

Dilution

FC~~1:10~50

IHC-P~~1:50~100

WB~~1:1000

E~~Use at an assay dependent concentration.

Format

Purified polyclonal antibody supplied in PBS with 0.09% (W/V) sodium azide. This antibody is purified through a protein A column, followed by peptide affinity purification.

Storage

Maintain refrigerated at 2-8°C for up to 2 weeks. For long term storage store at -20°C in small aliquots to prevent freeze-thaw cycles.

Precautions

CLGN Antibody (Center) is for research use only and not for use in diagnostic or therapeutic procedures.

CLGN Antibody (Center) - Protein Information**Name** CLGN**Function** Functions during spermatogenesis as a chaperone for a range of client proteins that are

important for sperm adhesion onto the egg zona pellucida and for subsequent penetration of the zona pellucida. Required for normal sperm migration from the uterus into the oviduct. Required for normal male fertility. Binds calcium ions (By similarity).

Cellular Location

Endoplasmic reticulum membrane; Single-pass type I membrane protein

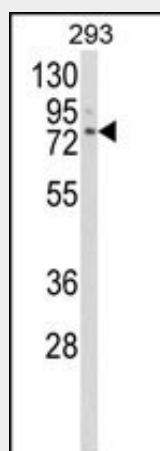
Tissue Location

Detected in testis (at protein level). Detected in testis.

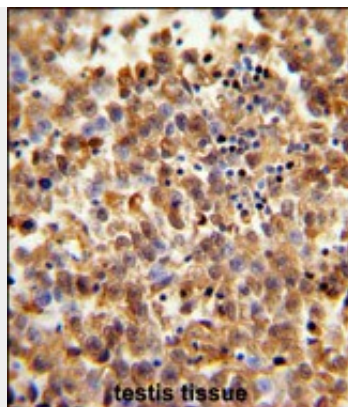
CLGN Antibody (Center) - Protocols

Provided below are standard protocols that you may find useful for product applications.

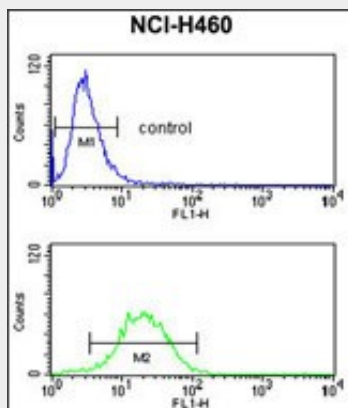
- [Western Blot](#)
- [Blocking Peptides](#)
- [Dot Blot](#)
- [Immunohistochemistry](#)
- [Immunofluorescence](#)
- [Immunoprecipitation](#)
- [Flow Cytometry](#)
- [Cell Culture](#)

CLGN Antibody (Center) - Images

Western blot analysis of CLGN Antibody (Center) (Cat. #AP9022c) in 293 cell line lysates (35ug/lane). CLGN (arrow) was detected using the purified Pab.



Formalin-fixed and paraffin-embedded human testis tissue reacted with CLGN Antibody (Center), which was peroxidase-conjugated to the secondary antibody, followed by DAB staining. This data demonstrates the use of this antibody for immunohistochemistry; clinical relevance has not been evaluated.



CLGN Antibody (Center) (Cat. #AP9022c) flow cytometry analysis of NCI-H460 cells (bottom histogram) compared to a negative control cell (top histogram). FITC-conjugated goat-anti-rabbit secondary antibodies were used for the analysis.

CLGN Antibody (Center) - Background

CLGN probably plays an important role in spermatogenesis. Binds calcium ions.

CLGN Antibody (Center) - References

van Lith M., et.al., Mol. Biol. Cell 18:2795-2804(2007).

CLGN Antibody (Center) - Citations

- [Quantitative Proteomics of Human Fibroblasts with I1061T Mutation in Niemann-Pick C1 \(NPC1\) Protein Provides Insights into the Disease Pathogenesis.](#)