

**MMP2 Antibody**  
**Rabbit mAb**  
**Catalog # AP90239****Specification**

---

**MMP2 Antibody - Product Information**

Application	WB, IHC
Primary Accession	<a href="#">P08253</a>
Reactivity	Rat
Clonality	Monoclonal
<b>Other Names</b>	
72 kDa gelatinase; 72 kDa type IV collagenase; CLG4; CLG4A; collagenase type IV-A; Gelatinase A; Matrix metalloproteinase-2; matrix metalloproteinase-II; MMP2; MMP11;	
Isotype	Rabbit IgG
Host	Rabbit
Calculated MW	73882 Da

**MMP2 Antibody - Additional Information**

Dilution	WB~~1:1000 IHC~~1:100~500
Purification	Affinity-chromatography
Immunogen	A synthesized peptide derived from human MMP2
Description	MMP2 Ubiquitous metalloproteinase that is involved in diverse functions such as remodeling of the vasculature, angiogenesis, tissue repair, tumor invasion, inflammation, and atherosclerotic plaque rupture. As well as degrading extracellular matrix proteins, can also act on several nonmatrix proteins such as big endothelial 1 and beta-type CGRP promoting vasoconstriction. Also cleaves KISS at a Gly- -Leu bond. Appears to have a role in myocardial cell death pathways.
Storage Condition and Buffer	Rabbit IgG in phosphate buffered saline , pH 7.4, 150mM NaCl, 0.02% sodium azide and 50% glycerol. Store at +4°C short term. Store at -20°C long term. Avoid freeze / thaw cycle.

**MMP2 Antibody - Protein Information****Name** MMP2**Synonyms** CLG4A

**Function**

Ubiquitous metalloproteinase that is involved in diverse functions such as remodeling of the vasculature, angiogenesis, tissue repair, tumor invasion, inflammation, and atherosclerotic plaque rupture. As well as degrading extracellular matrix proteins, can also act on several nonmatrix proteins such as big endothelial 1 and beta- type CGRP promoting vasoconstriction. Also cleaves KISS at a Gly-|-Leu bond. Appears to have a role in myocardial cell death pathways. Contributes to myocardial oxidative stress by regulating the activity of GSK3beta. Cleaves GSK3beta in vitro. Involved in the formation of the fibrovascular tissues in association with MMP14. [Isoform 2]: Mediates the proteolysis of CHUK/IKKA and initiates a primary innate immune response by inducing mitochondrial- nuclear stress signaling with activation of the pro-inflammatory NF-kappaB, NFAT and IRF transcriptional pathways.

**Cellular Location**

[Isoform 1]: Secreted, extracellular space, extracellular matrix. Membrane. Nucleus  
Note=Colocalizes with integrin alphaV/beta3 at the membrane surface in angiogenic blood vessels and melanomas. Found in mitochondria, along microfibrils, and in nuclei of cardiomyocytes

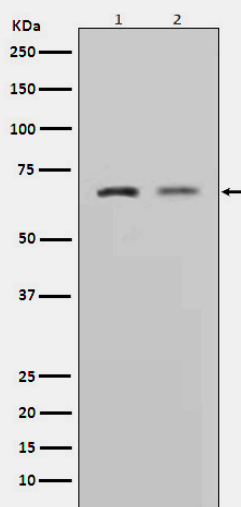
**Tissue Location**

Produced by normal skin fibroblasts. PEX is expressed in a number of tumors including gliomas, breast and prostate

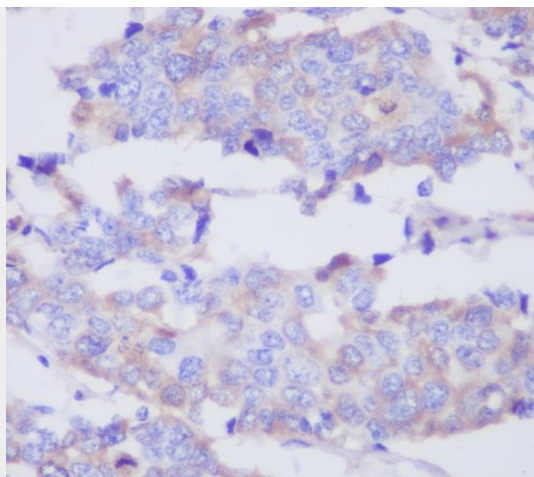
**MMP2 Antibody - Protocols**

Provided below are standard protocols that you may find useful for product applications.

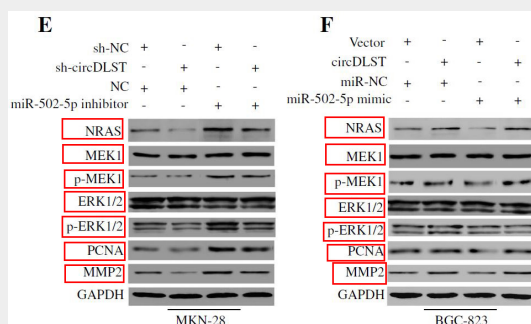
- [Western Blot](#)
- [Blocking Peptides](#)
- [Dot Blot](#)
- [Immunohistochemistry](#)
- [Immunofluorescence](#)
- [Immunoprecipitation](#)
- [Flow Cytometry](#)
- [Cell Culture](#)

**MMP2 Antibody - Images**

Western blot analysis of MMP2 expression in (1)L6 cell lysate;(2)HeLa cell lysate.



Immunohistochemical analysis of paraffin-embedded human breast adenocarcinoma, using MMP2 Antibody.



CircDLST promotes the tumorigenesis and metastasis of gastric cancer by sponging miR-502-5p and activating the NRAS/MEK1/ERK1/2 signaling. -Molecular Cancer