

**CD34 Antibody**  
**Rabbit mAb**  
**Catalog # AP90246****Specification**

---

**CD34 Antibody - Product Information**

Application	WB, IHC, ICC, IP
Primary Accession	<a href="#">P28906</a>
Reactivity	Rat, Dog
Clonality	Monoclonal
<b>Other Names</b>	
Hematopoietic progenitor cell antigen CD34; CD34	

Isotype	Rabbit IgG
Host	Rabbit
Calculated MW	40716 Da

**CD34 Antibody - Additional Information**

Dilution	WB~~1:1000 IHC~~1:100~500 ICC~~N/A IP~~N/A
Purification	Affinity-chromatography
Immunogen	A synthesized peptide derived from human CD34
Description	Possible adhesion molecule with a role in early hematopoiesis by mediating the attachment of stem cells to the bone marrow extracellular matrix or directly to stromal cells. Could act as a scaffold for the attachment of lineage specific glycans, allowing stem cells to bind to lectins expressed by stromal cells or other marrow components. Presents carbohydrate ligands to selectins.
Storage Condition and Buffer	Rabbit IgG in phosphate buffered saline , pH 7.4, 150mM NaCl, 0.02% sodium azide and 50% glycerol. Store at +4°C short term. Store at -20°C long term. Avoid freeze / thaw cycle.

**CD34 Antibody - Protein Information****Name** CD34**Function**

Possible adhesion molecule with a role in early hematopoiesis by mediating the attachment of stem cells to the bone marrow extracellular matrix or directly to stromal cells. Could act as a

scaffold for the attachment of lineage specific glycans, allowing stem cells to bind to lectins expressed by stromal cells or other marrow components. Presents carbohydrate ligands to selectins.

**Cellular Location**

Membrane; Single-pass type I membrane protein.

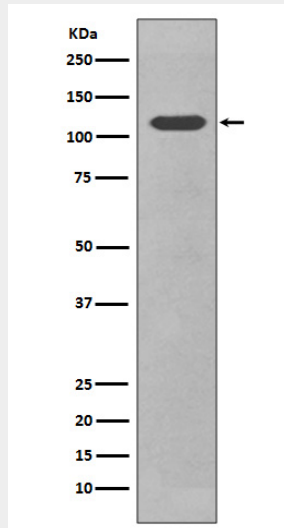
**Tissue Location**

Selectively expressed on hematopoietic progenitor cells and the small vessel endothelium of a variety of tissues

**CD34 Antibody - Protocols**

Provided below are standard protocols that you may find useful for product applications.

- [Western Blot](#)
- [Blocking Peptides](#)
- [Dot Blot](#)
- [Immunohistochemistry](#)
- [Immunofluorescence](#)
- [Immunoprecipitation](#)
- [Flow Cytometry](#)
- [Cell Culture](#)

**CD34 Antibody - Images**

Western blot analysis of CD34 in expression NIH/3T3 cell lysate.