

**SOS1 Antibody (Center)**  
**Affinity Purified Rabbit Polyclonal Antibody (Pab)**  
**Catalog # AP9024c****Specification**

---

**SOS1 Antibody (Center) - Product Information**

Application	WB, IHC-P,E
Primary Accession	<a href="#">Q07889</a>
Reactivity	Human
Host	Rabbit
Clonality	Polyclonal
Isotype	Rabbit IgG
Antigen Region	934-962

**SOS1 Antibody (Center) - Additional Information****Gene ID** 6654**Other Names**

Son of sevenless homolog 1, SOS-1, SOS1

**Target/Specificity**

This SOS1 antibody is generated from rabbits immunized with a KLH conjugated synthetic peptide between 934-962 amino acids from the Central region of human SOS1.

**Dilution**

WB~~1:2000

IHC-P~~N/A

E~~Use at an assay dependent concentration.

**Format**

Purified polyclonal antibody supplied in PBS with 0.09% (W/V) sodium azide. This antibody is purified through a protein A column, followed by peptide affinity purification.

**Storage**

Maintain refrigerated at 2-8°C for up to 2 weeks. For long term storage store at -20°C in small aliquots to prevent freeze-thaw cycles.

**Precautions**

SOS1 Antibody (Center) is for research use only and not for use in diagnostic or therapeutic procedures.

**SOS1 Antibody (Center) - Protein Information****Name** SOS1

**Function** Promotes the exchange of Ras-bound GDP by GTP (PubMed:[8493579](#)). Probably by promoting Ras activation, regulates phosphorylation of MAP kinase MAPK3/ERK1 in response to

EGF (PubMed:[17339331](#)). Catalytic component of a trimeric complex that participates in transduction of signals from Ras to Rac by promoting the Rac-specific guanine nucleotide exchange factor (GEF) activity (By similarity).

#### **Tissue Location**

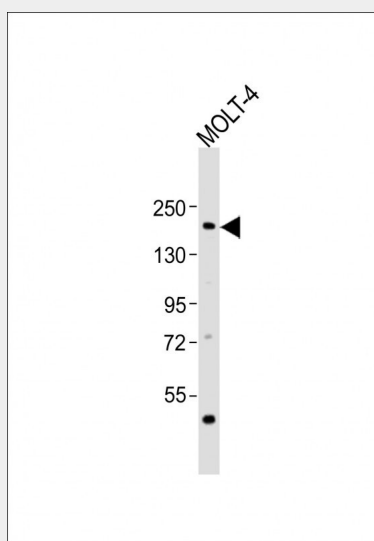
Expressed in gingival tissues.

### **SOS1 Antibody (Center) - Protocols**

Provided below are standard protocols that you may find useful for product applications.

- [Western Blot](#)
- [Blocking Peptides](#)
- [Dot Blot](#)
- [Immunohistochemistry](#)
- [Immunofluorescence](#)
- [Immunoprecipitation](#)
- [Flow Cytometry](#)
- [Cell Culture](#)

### **SOS1 Antibody (Center) - Images**



Anti-SOS1 Antibody (Center) at 1:2000 dilution + MOLT-4 whole cell lysates. Lysates/proteins at 20 µg per lane. Secondary Goat Anti-Rabbit IgG, (H+L), Peroxidase conjugated at 1/10000 dilution. Predicted band size : 152.5 kDa. Blocking/Dilution buffer: 5% NFDM/TBST.

### **SOS1 Antibody (Center) - Background**

Son of Sevenless 1 protein is an activator of ras proteins by stimulating the exchange of GDP for GTP on ras. Murine Son of Sevenless proteins have been shown to form a complex with activated EGF receptor, coupling tyrosine kinases to ras proteins. The SOS gene was originally isolated in *Drosophila*. Two mammalian homologues (mSOS1 and mSOS2) have been isolated from a mouse cDNA library and are expressed in a variety of mouse embryo and adult tissues. Human SOS1 and SOS2 homologs have also been isolated. The two mouse homologs are approximately 70% identical in composition. The mammalian SOS1 protein has a highly specific guanine nucleotide exchange activity towards p21ras. In epidermal growth factor stimulated cells, SOS1 interacts with SH3 domains of GRB2 and binds via SH2 domain to tyrosine 1068 of activated Epidermal Growth Factor

receptor.

### **SOS1 Antibody (Center) - References**

Roberts A.E., et.al., Nat. Genet. 39:70-74(2007).