

MCM2 Antibody
Rabbit mAb
Catalog # AP90250

Specification

MCM2 Antibody - Product Information

Application	WB, IHC, ICC
Primary Accession	P49736
Reactivity	Rat
Clonality	Monoclonal
Other Names	
BM28; CCNL1; cdc19; CDCL1; cell division cycle-like 1; cyclin-like 1; D3S3194; MCM2; MCM2 minichromosome maintenance deficient 2, mitotin;	
Isotype	Rabbit IgG
Host	Rabbit
Calculated MW	101896 Da

MCM2 Antibody - Additional Information

Dilution	WB~~1:1000 IHC~~1:100~500 ICC~~N/A
Purification	Affinity-chromatography
Immunogen	A synthesized peptide derived from human MCM2
Description	The minichromosome maintenance (MCM) 2-7 proteins are a family of six related proteins required for the initiation and elongation of DNA replication. MCM2-7 bind together to form the heterohexameric MCM complex that is thought to act as a replicative helicase at the DNA replication fork. This complex is also a key component of the pre-replication complex (pre-RC). Cdc6 and CDT1 recruit the MCM complex to the origin recognition complex (ORC) during late mitosis/early G1 phase forming the pre-RC and licensing the DNA for replication.
Storage Condition and Buffer	Rabbit IgG in phosphate buffered saline , pH 7.4, 150mM NaCl, 0.02% sodium azide and 50% glycerol. Store at +4°C short term. Store at -20°C long term. Avoid freeze / thaw cycle.

MCM2 Antibody - Protein Information

Name MCM2 ([HGNC:6944](#))

Function

Acts as a component of the MCM2-7 complex (MCM complex) which is the replicative helicase essential for 'once per cell cycle' DNA replication initiation and elongation in eukaryotic cells. Core component of CDC45-MCM-GINS (CMG) helicase, the molecular machine that unwinds template DNA during replication, and around which the replisome is built (PubMed:32453425, PubMed:34694004, PubMed:34700328, PubMed:35585232). The active ATPase sites in the MCM2-7 ring are formed through the interaction surfaces of two neighboring subunits such that a critical structure of a conserved arginine finger motif is provided in trans relative to the ATP-binding site of the Walker A box of the adjacent subunit. The six ATPase active sites, however, are likely to contribute differentially to the complex helicase activity (PubMed:32453425). Required for the entry in S phase and for cell division (PubMed:8175912). Plays a role in terminally differentiated hair cells development of the cochlea and induces cells apoptosis (PubMed:26196677).

Cellular Location

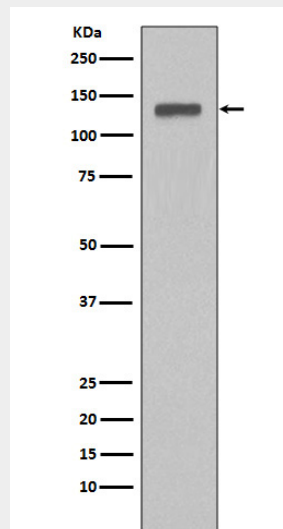
Nucleus. Chromosome. Note=Associated with chromatin before the formation of nuclei and detaches from it as DNA replication progresses. {ECO:0000250|UniProtKB:P55861}

MCM2 Antibody - Protocols

Provided below are standard protocols that you may find useful for product applications.

- [Western Blot](#)
- [Blocking Peptides](#)
- [Dot Blot](#)
- [Immunohistochemistry](#)
- [Immunofluorescence](#)
- [Immunoprecipitation](#)
- [Flow Cytometry](#)
- [Cell Culture](#)

MCM2 Antibody - Images



Western blot analysis of MCM2 expression in HeLa cell lysate.