

MMP9 Antibody
Rabbit mAb
Catalog # AP90253**Specification**

MMP9 Antibody - Product Information

Application	WB, IHC, FC, ICC
Primary Accession	P14780
Reactivity	Rat
Clonality	Monoclonal
Other Names	
MMP9; GELB; CLG4B; Matrix Metalloproteinase 9; MANDP2; Gelatinase beta;	
Isotype	Rabbit IgG
Host	Rabbit
Calculated MW	78458 Da

MMP9 Antibody - Additional Information

Dilution	WB~~1:1000 IHC~~1:100~500 FC~~1:10~50 ICC~~N/A
Purification	Affinity-chromatography
Immunogen	A synthesized peptide derived from human MMP9
Description	MMP9 May play an essential role in local proteolysis of the extracellular matrix and in leukocyte migration. Could play a role in bone osteoclastic resorption. Cleaves KiSS1 at a Gly- -Leu bond. Cleaves type IV and type V collagen into large C-terminal three quarter fragments and shorter N-terminal one quarter fragments. Degrades fibronectin but not laminin or Pz-peptide. Belongs to the peptidase M10A family.
Storage Condition and Buffer	Rabbit IgG in phosphate buffered saline , pH 7.4, 150mM NaCl, 0.02% sodium azide and 50% glycerol. Store at +4°C short term. Store at -20°C long term. Avoid freeze / thaw cycle.

MMP9 Antibody - Protein Information**Name** MMP9**Synonyms** CLG4B

Function

Matrix metalloproteinase that plays an essential role in local proteolysis of the extracellular matrix and in leukocyte migration (PubMed:12879005, PubMed:1480034, PubMed:2551898). Could play a role in bone osteoclastic resorption (By similarity). Cleaves KiSS1 at a Gly-I-Leu bond (PubMed:12879005). Cleaves NINJ1 to generate the Secreted ninjurin-1 form (PubMed:32883094). Cleaves type IV and type V collagen into large C-terminal three quarter fragments and shorter N-terminal one quarter fragments (PubMed:1480034). Degrades fibronectin but not laminin or Pz-peptide.

Cellular Location

Secreted, extracellular space, extracellular matrix

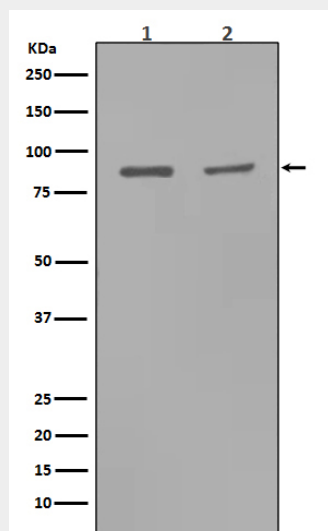
Tissue Location

Detected in neutrophils (at protein level) (PubMed:7683678). Produced by normal alveolar macrophages and granulocytes.

MMP9 Antibody - Protocols

Provided below are standard protocols that you may find useful for product applications.

- [Western Blot](#)
- [Blocking Peptides](#)
- [Dot Blot](#)
- [Immunohistochemistry](#)
- [Immunofluorescence](#)
- [Immunoprecipitation](#)
- [Flow Cytometry](#)
- [Cell Culture](#)

MMP9 Antibody - Images

Western blot analysis of MMP9 expression in (1) Rat kidney tissue lysate; (2) Rat lung tissue lysate.