

**CD146 Antibody**  
**Rabbit mAb**  
**Catalog # AP90257****Specification**

---

**CD146 Antibody - Product Information**

Application	WB, IHC, FC, ICC, IP
Primary Accession	<a href="#">P43121</a>
Reactivity	Rat
Clonality	Monoclonal
<b>Other Names</b>	
A32 antigen; CD 146; CD146; CD146 antigen; Cell surface glycoprotein P1H12; Gicerin; MCAM; Melanoma adhesion molecule; Melanoma associated antigen A32;	
Isotype	Rabbit IgG
Host	Rabbit
Calculated MW	71607 Da

**CD146 Antibody - Additional Information**

Dilution	WB~~1:1000 IHC~~1:100~500 FC~~1:10~50 ICC~~N/A IP~~N/A
Purification	Affinity-chromatography
Immunogen	A synthesized peptide derived from human CD146
Description	CD146 plays a role in cell adhesion, and in cohesion of the endothelial monolayer at intercellular junctions in vascular tissue. Its expression may allow melanoma cells to interact with cellular elements of the vascular system, thereby enhancing hematogeneous tumor spread. Could be an adhesion molecule active in neural crest cells during embryonic development.
Storage Condition and Buffer	Rabbit IgG in phosphate buffered saline , pH 7.4, 150mM NaCl, 0.02% sodium azide and 50% glycerol. Store at +4°C short term. Store at -20°C long term. Avoid freeze / thaw cycle.

**CD146 Antibody - Protein Information****Name** MCAM**Synonyms** MUC18

**Function**

Plays a role in cell adhesion, and in cohesion of the endothelial monolayer at intercellular junctions in vascular tissue. Its expression may allow melanoma cells to interact with cellular elements of the vascular system, thereby enhancing hematogeneous tumor spread. Could be an adhesion molecule active in neural crest cells during embryonic development. Acts as a surface receptor that triggers tyrosine phosphorylation of FYN and PTK2/FAK1, and a transient increase in the intracellular calcium concentration.

**Cellular Location**

Membrane; Single-pass type I membrane protein.

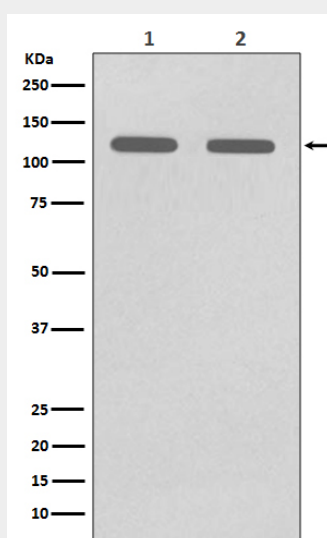
**Tissue Location**

Detected in endothelial cells in vascular tissue throughout the body. May appear at the surface of neural crest cells during their embryonic migration. Appears to be limited to vascular smooth muscle in normal adult tissues. Associated with tumor progression and the development of metastasis in human malignant melanoma. Expressed most strongly on metastatic lesions and advanced primary tumors and is only rarely detected in benign melanocytic nevi and thin primary melanomas with a low probability of metastasis

**CD146 Antibody - Protocols**

Provided below are standard protocols that you may find useful for product applications.

- [Western Blot](#)
- [Blocking Peptides](#)
- [Dot Blot](#)
- [Immunohistochemistry](#)
- [Immunofluorescence](#)
- [Immunoprecipitation](#)
- [Flow Cytometry](#)
- [Cell Culture](#)

**CD146 Antibody - Images**

Western blot analysis of CD146 expression in (1) A375 cell lysate;(2) HUVEC cell lysate.