

DLK2 Antibody (C-term)
Affinity Purified Rabbit Polyclonal Antibody (Pab)
Catalog # AP9025b

Specification

DLK2 Antibody (C-term) - Product Information

Application	WB, IHC-P, FC,E
Primary Accession	Q6UY11
Reactivity	Human
Host	Rabbit
Clonality	Polyclonal
Isotype	Rabbit IgG
Antigen Region	353-380

DLK2 Antibody (C-term) - Additional Information

Gene ID 65989

Other Names

Protein delta homolog 2, DLK-2, Epidermal growth factor-like protein 9, EGF-like protein 9, DLK2, EGFL9

Target/Specificity

This DLK2 antibody is generated from rabbits immunized with a KLH conjugated synthetic peptide between 353-380 amino acids from the C-terminal region of human DLK2.

Dilution

WB~~1:1000
IHC-P~~1:50~100
FC~~1:10~50

Format

Purified polyclonal antibody supplied in PBS with 0.09% (W/V) sodium azide. This antibody is purified through a protein A column, followed by peptide affinity purification.

Storage

Maintain refrigerated at 2-8°C for up to 2 weeks. For long term storage store at -20°C in small aliquots to prevent freeze-thaw cycles.

Precautions

DLK2 Antibody (C-term) is for research use only and not for use in diagnostic or therapeutic procedures.

DLK2 Antibody (C-term) - Protein Information

Name DLK2

Synonyms EGFL9

Function Regulates adipogenesis.

Cellular Location

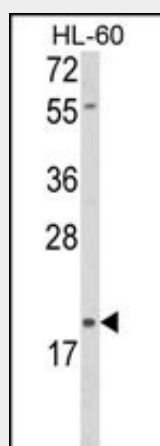
Membrane; Single-pass type I membrane protein

DLK2 Antibody (C-term) - Protocols

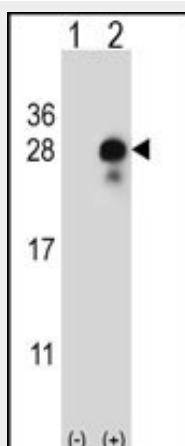
Provided below are standard protocols that you may find useful for product applications.

- [Western Blot](#)
- [Blocking Peptides](#)
- [Dot Blot](#)
- [Immunohistochemistry](#)
- [Immunofluorescence](#)
- [Immunoprecipitation](#)
- [Flow Cytometry](#)
- [Cell Culture](#)

DLK2 Antibody (C-term) - Images

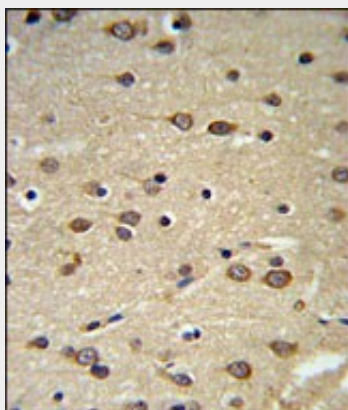


Western blot analysis of DLK2 Antibody (C-term) (Cat. #AP9025b) in HL-60 cell line lysates (35ug/lane). DLK2 (arrow) was detected using the purified Pab.

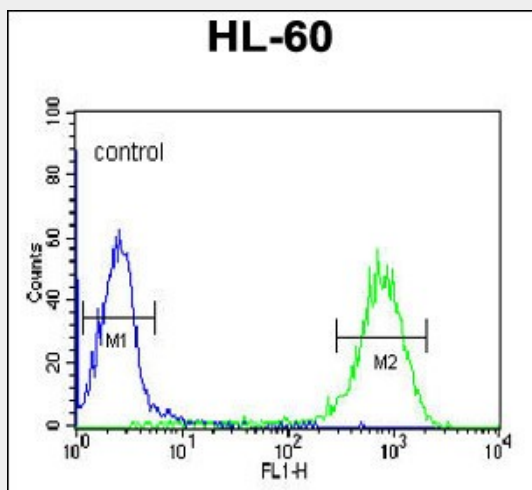


Western blot analysis of DLK2 (arrow) using rabbit polyclonal DLK2 Antibody (C-term) (Cat. #AP9025b). 293 cell lysates (2 ug/lane) either nontransfected (Lane 1) or transiently transfected

(Lane 2) with the DLK2 gene.



DLK2 Antibody (C-term) (Cat. #AP9025b) IHC analysis in formalin fixed and paraffin embedded brain tissue followed by peroxidase conjugation of the secondary antibody and DAB staining. This data demonstrates the use of the DLK2 Antibody (C-term) for immunohistochemistry. Clinical relevance has not been evaluated.



DLK2 Antibody (C-term) (Cat. #AP9025b) flow cytometric analysis of HL-60 cells (right histogram) compared to a negative control cell (left histogram). FITC-conjugated goat-anti-rabbit secondary antibodies were used for the analysis.

DLK2 Antibody (C-term) - Background

DLK2 (Delta like protein 2) affects adipogenesis of 3T3-L1 preadipocytes and mesenchymal C3H10T1/2 cells suggesting a role as a regulator of adipogenesis.

DLK2 Antibody (C-term) - References

Mural R.J., et.al., Submitted (JUL-2005) to the EMBL/GenBank/DDBJ databases.

DLK2 Antibody (C-term) - Citations

- [The mixed-lineage kinase DLK is a key regulator of 3T3-L1 adipocyte differentiation.](#)