

Pax2 Antibody
Rabbit mAb
Catalog # AP90260**Specification**

Pax2 Antibody - Product Information

Application	WB, IHC, FC
Primary Accession	Q02962
Reactivity	Human, Mouse
Clonality	Monoclonal
Other Names	
PAX2; Paired box protein Pax-2	

Isotype	Rabbit IgG
Host	Rabbit
Calculated MW	44706 Da

Pax2 Antibody - Additional Information

Purification	Affinity-chromatography
Immunogen	A synthesized peptide derived from human Pax2
Description	PAX2 mutations can be responsible for renal hypoplasia, either isolated or associated with various ophthalmologic manifestations ranging from retinal coloboma to microphthalmia. Lesions in the PAX6 gene accounts for most cases of aniridia, a congenital malformation of the eye, chiefly characterized by iris hypoplasia, which can cause blindness.
Storage Condition and Buffer	Rabbit IgG in phosphate buffered saline , pH 7.4, 150mM NaCl, 0.02% sodium azide and 50% glycerol. Store at +4°C short term. Store at -20°C long term. Avoid freeze / thaw cycle.

Pax2 Antibody - Protein Information**Name** PAX2**Function**

Transcription factor that may have a role in kidney cell differentiation (PubMed:24676634). Has a critical role in the development of the urogenital tract, the eyes, and the CNS.

Cellular Location

Nucleus.

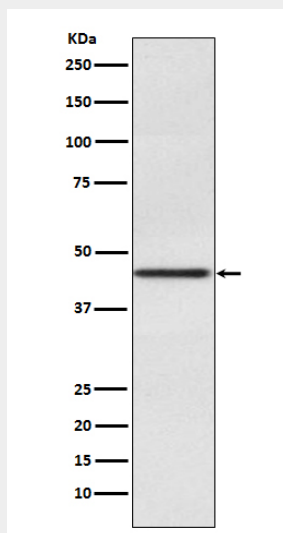
Tissue Location

Expressed in primitive cells of the kidney, ureter, eye, ear and central nervous system

Pax2 Antibody - Protocols

Provided below are standard protocols that you may find useful for product applications.

- [Western Blot](#)
- [Blocking Peptides](#)
- [Dot Blot](#)
- [Immunohistochemistry](#)
- [Immunofluorescence](#)
- [Immunoprecipitation](#)
- [Flow Cytometry](#)
- [Cell Culture](#)

Pax2 Antibody - Images

Western blot analysis of Pax2 expression in Human fetal kidney lysate.