

LRP1 Antibody
Rabbit mAb
Catalog # AP90262**Specification**

LRP1 Antibody - Product Information

Application	WB, IHC, FC, ICC, IP
Primary Accession	Q07954
Reactivity	Rat
Clonality	Monoclonal
Other Names	
A2MR; alpha 2MR; Alpha 2 macroglobulin receptor; CD91; APR; LRP1; LRP85; TGFBR5;	
Isotype	Rabbit IgG
Host	Rabbit
Calculated MW	504606 Da

LRP1 Antibody - Additional Information

Dilution	WB~~1:1000 IHC~~1:100~500 FC~~1:10~50 ICC~~N/A IP~~N/A
Purification	Affinity-chromatography
Immunogen	A synthesized peptide derived from human LRP1
Description	Endocytic receptor involved in endocytosis and in phagocytosis of apoptotic cells. Required for early embryonic development. Involved in cellular lipid homeostasis. Involved in the plasma clearance of chylomicron remnants and activated LRPAP1 (alpha 2-macroglobulin), as well as the local metabolism of complexes between plasminogen activators and their endogenous inhibitors. May modulate cellular events, such as APP metabolism, kinase-dependent intracellular signaling, neuronal calcium signaling as well as neurotransmission. Functions as a receptor for Pseudomonas aeruginosa exotoxin A. Rabbit IgG in phosphate buffered saline , pH 7.4, 150mM NaCl, 0.02% sodium azide and 50% glycerol. Store at +4°C short term. Store at -20°C long term. Avoid freeze / thaw cycle.
Storage Condition and Buffer	

LRP1 Antibody - Protein Information

Name LRP1 ([HGNC:6692](#))

Synonyms A2MR, APR

Function

Endocytic receptor involved in endocytosis and in phagocytosis of apoptotic cells (PubMed:[11907044](http://www.uniprot.org/citations/11907044), PubMed:[12713657](http://www.uniprot.org/citations/12713657)). Required for early embryonic development (By similarity). Involved in cellular lipid homeostasis. Involved in the plasma clearance of chylomicron remnants and activated LRPAP1 (alpha 2-macroglobulin), as well as the local metabolism of complexes between plasminogen activators and their endogenous inhibitors. Acts as an LRPAP1 alpha-2- macroglobulin receptor (PubMed:[1702392](http://www.uniprot.org/citations/1702392), PubMed:[26142438](http://www.uniprot.org/citations/26142438)). Acts as TAU/MAPT receptor and controls the endocytosis of TAU/MAPT as well as its subsequent spread (PubMed:[32296178](http://www.uniprot.org/citations/32296178)). May modulate cellular events, such as APP metabolism, kinase-dependent intracellular signaling, neuronal calcium signaling as well as neurotransmission (PubMed:[12888553](http://www.uniprot.org/citations/12888553)). Also acts as a receptor for IGFBP3 to mediate cell growth inhibition (PubMed:[9252371](http://www.uniprot.org/citations/9252371)).

Cellular Location

[Low-density lipoprotein receptor-related protein 1 85 kDa subunit]: Cell membrane; Single-pass type I membrane protein Membrane, coated pit [Low-density lipoprotein receptor-related protein 1 intracellular domain]: Cytoplasm Nucleus. Note=After cleavage, the intracellular domain (LRPICD) is detected both in the cytoplasm and in the nucleus.

Tissue Location

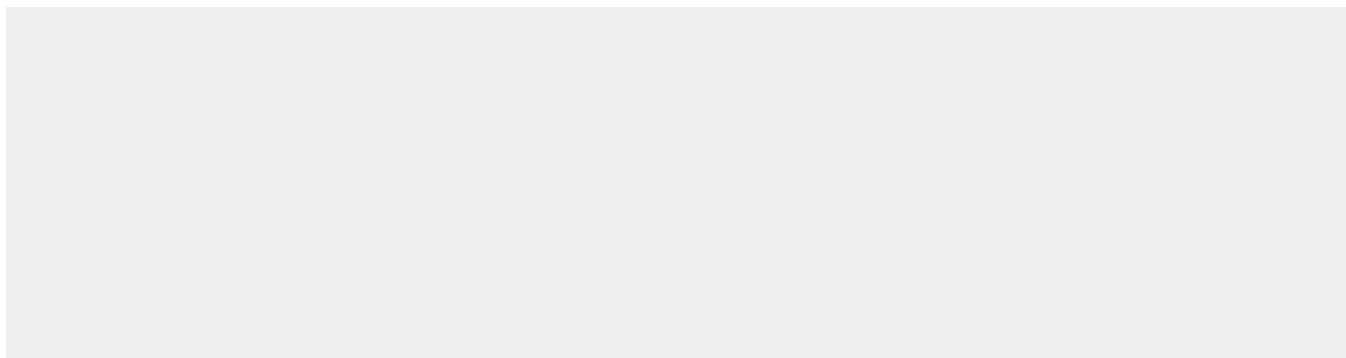
Most abundant in liver, brain and lung.

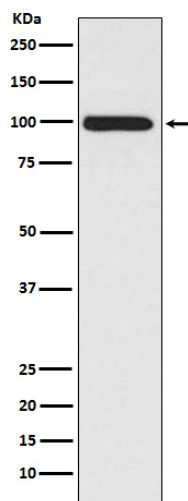
LRP1 Antibody - Protocols

Provided below are standard protocols that you may find useful for product applications.

- [Western Blot](#)
- [Blocking Peptides](#)
- [Dot Blot](#)
- [Immunohistochemistry](#)
- [Immunofluorescence](#)
- [Immunoprecipitation](#)
- [Flow Cytometry](#)
- [Cell Culture](#)

LRP1 Antibody - Images





Western blot analysis of LRP1 expression in A549 cell lysate.