

Calmodulin Antibody
Rabbit mAb
Catalog # AP90281**Specification**

Calmodulin Antibody - Product Information

Application	WB, IHC, FC, ICC, IP
Primary Accession	P62158
Reactivity	Rat
Clonality	Monoclonal
Other Names	
CALM; CALM1; CALM2; CALM3; CAM; CAM1; CAM2; CAM3; CAMB; CAMC;	
Isotype	Rabbit IgG
Host	Rabbit
Calculated MW	17kDa KDa

Calmodulin Antibody - Additional Information

Dilution	WB~~1:1000 IHC~~1:100~500 FC~~1:10~50 ICC~~N/A IP~~N/A
Purification	Affinity-chromatography
Immunogen	A synthesized peptide derived from human Calmodulin
Description	Calmodulin is the archetype of the family of calcium-modulated proteins of which nearly 20 members have been found. They are identified by their occurrence in the cytosol or on membranes facing the cytosol and by a high affinity for calcium.
Storage Condition and Buffer	Rabbit IgG in phosphate buffered saline , pH 7.4, 150mM NaCl, 0.02% sodium azide and 50% glycerol. Store at +4°C short term. Store at -20°C long term. Avoid freeze / thaw cycle.

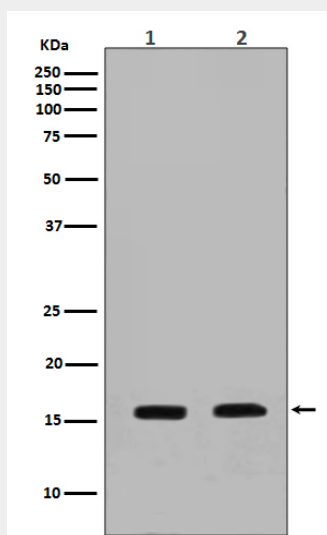
Calmodulin Antibody - Protein Information**Calmodulin Antibody - Protocols**

Provided below are standard protocols that you may find useful for product applications.

- [Western Blot](#)
- [Blocking Peptides](#)

- [Dot Blot](#)
- [Immunohistochemistry](#)
- [Immunofluorescence](#)
- [Immunoprecipitation](#)
- [Flow Cytometry](#)
- [Cell Culture](#)

Calmodulin Antibody - Images



Western blot analysis of Calmodulin expression in (1) NIH-3T3 cell lysate; (2) MCF-7 cell lysate.