

LDL Receptor Antibody
Rabbit mAb
Catalog # AP90282**Specification**

LDL Receptor Antibody - Product Information

Application	WB, FC, ICC
Primary Accession	P01130
Clonality	Monoclonal
Other Names	
FH ; FHC ; LDL receptor; LDLCQ2; LDLR ; Low Density Lipoprotein Receptor; Low density lipoprotein receptor class A domain containing protein 3;	
Isotype	Rabbit IgG
Host	Rabbit
Calculated MW	95376 Da

LDL Receptor Antibody - Additional Information

Dilution	WB~~1:1000 FC~~1:10~50 ICC~~N/A
Purification	Affinity-chromatography
Immunogen	A synthesized peptide derived from human LDL Receptor
Description	Binds LDL, the major cholesterol-carrying lipoprotein of plasma, and transports it into cells by endocytosis. In order to be internalized, the receptor-ligand complexes must first cluster into clathrin-coated pits. In case of HIV-1 infection, functions as a receptor for extracellular Tat in neurons, mediating its internalization in uninfected cells.
Storage Condition and Buffer	Rabbit IgG in phosphate buffered saline , pH 7.4, 150mM NaCl, 0.02% sodium azide and 50% glycerol. Store at +4°C short term. Store at -20°C long term. Avoid freeze / thaw cycle.

LDL Receptor Antibody - Protein Information**Name** LDLR**Function**

Binds low density lipoprotein /LDL, the major cholesterol- carrying lipoprotein of plasma, and transports it into cells by endocytosis. In order to be internalized, the receptor-ligand complexes must first cluster into clathrin-coated pits. Forms a ternary complex with PGRMC1 and TMEM97 receptors which increases LDLR-mediated LDL internalization (PubMed:30443021).

Cellular Location

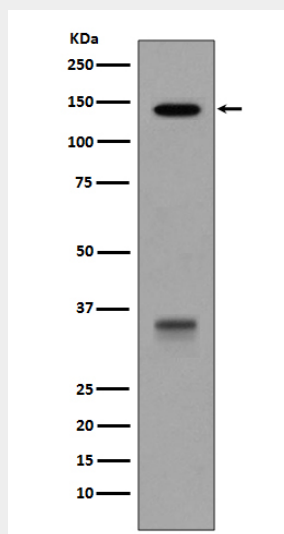
Cell membrane; Single-pass type I membrane protein {ECO:0000250|UniProtKB:P01131}. Membrane, clathrin-coated pit. Golgi apparatus. Early endosome. Late endosome. Lysosome
Note=Rapidly endocytosed upon ligand binding. Localized at cell membrane, probably in lipid rafts, in serum-starved conditions (PubMed:30443021).

LDL Receptor Antibody - Protocols

Provided below are standard protocols that you may find useful for product applications.

- [Western Blot](#)
- [Blocking Peptides](#)
- [Dot Blot](#)
- [Immunohistochemistry](#)
- [Immunofluorescence](#)
- [Immunoprecipitation](#)
- [Flow Cytometry](#)
- [Cell Culture](#)

LDL Receptor Antibody - Images



Western blot analysis of LDLR expression in HepG2 cell lysate.