

**CD86 Antibody**  
**Rabbit mAb**  
**Catalog # AP90285**

## Specification

---

### CD86 Antibody - Product Information

Application	WB, IHC, FC, ICC, IP
Primary Accession	<a href="#">P42081</a>
Clonality	Monoclonal
<b>Other Names</b>	
CD86;B7-2;B70;CD28LG2;LAB72;MGC34413; CTLA4 counter receptor B72; CLS1; Ly58; MB7;	
Isotype	Rabbit IgG
Host	Rabbit
Calculated MW	37682 Da

### CD86 Antibody - Additional Information

Dilution	WB~~1:1000 IHC~~1:100~500 FC~~1:10~50 ICC~~N/A IP~~N/A
Purification	Affinity-chromatography
Immunogen	A synthesized peptide derived from human CD86
Description	Receptor involved in the costimulatory signal essential for T-lymphocyte proliferation and interleukin-2 production, by binding CD28 or CTLA-4. May play a critical role in the early events of T-cell activation and costimulation of naive T-cells, such as deciding between immunity and anergy that is made by T-cells within 24 hours after activation. Isoform 2 interferes with the formation of CD86 clusters, and thus acts as a negative regulator of T-cell activation.
Storage Condition and Buffer	Rabbit IgG in phosphate buffered saline , pH 7.4, 150mM NaCl, 0.02% sodium azide and 50% glycerol. Store at +4°C short term. Store at -20°C long term. Avoid freeze / thaw cycle.

### CD86 Antibody - Protein Information

**Name** CD86

**Synonyms** CD28LG2

**Function**

Receptor involved in the costimulatory signal essential for T-lymphocyte proliferation and interleukin-2 production, by binding CD28 or CTLA-4 (PubMed:<a href="http://www.uniprot.org/citations/12196291" target="\_blank">12196291</a>). May play a critical role in the early events of T-cell activation and costimulation of naive T-cells, such as deciding between immunity and anergy that is made by T-cells within 24 hours after activation (PubMed:<a href="http://www.uniprot.org/citations/7527824" target="\_blank">7527824</a>). Also involved in the regulation of B cells function, plays a role in regulating the level of IgG(1) produced. Upon CD40 engagement, activates NF-kappa-B signaling pathway via phospholipase C and protein kinase C activation (By similarity).

**Cellular Location**

Cell membrane; Single-pass type I membrane protein

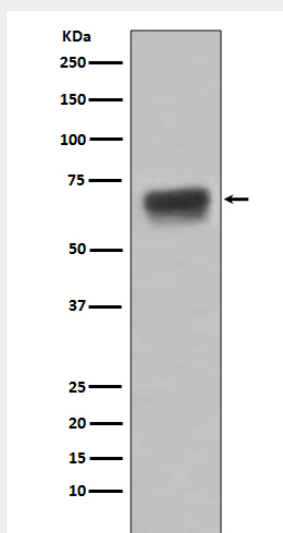
**Tissue Location**

Expressed by activated B-lymphocytes and monocytes.

**CD86 Antibody - Protocols**

Provided below are standard protocols that you may find useful for product applications.

- [Western Blot](#)
- [Blocking Peptides](#)
- [Dot Blot](#)
- [Immunohistochemistry](#)
- [Immunofluorescence](#)
- [Immunoprecipitation](#)
- [Flow Cytometry](#)
- [Cell Culture](#)

**CD86 Antibody - Images**

Western blot analysis of CD86 expression in Raji cell lysate.