

**p57 Kip2 Antibody**  
**Rabbit mAb**  
**Catalog # AP90293****Specification**

---

**p57 Kip2 Antibody - Product Information**

Application	WB, IHC, ICC, IP
Primary Accession	<a href="#">P49918</a>
Reactivity	Rat
Clonality	Monoclonal
<b>Other Names</b>	
BWCR; BWS; KIP2; WBS; p57; p57 Kip2; WBS ; CDKN1C; Cyclin dependent kinase inhibitor 1C	
Isotype	Rabbit IgG
Host	Rabbit
Calculated MW	32177 Da

**p57 Kip2 Antibody - Additional Information**

Dilution	WB~~1:1000 IHC~~1:100~500 ICC~~N/A IP~~N/A
Purification	Affinity-chromatography
Immunogen	A synthesized peptide derived from human p57 Kip2
Description	p27 Kip1 is a member of the Cip/Kip family of cyclin-dependent kinase inhibitors. Like its relatives, p57 Kip2 and p21 Waf1/Cip1, the ability to enforce the G1 restriction point is derived from its inhibitory binding to CDK2/cyclin E and other CDK/cyclin complexes. Expression levels of p27 are upregulated in quiescent cells and in cells treated with cAMP or other negative cell cycle regulators.
Storage Condition and Buffer	Rabbit IgG in phosphate buffered saline , pH 7.4, 150mM NaCl, 0.02% sodium azide and 50% glycerol. Store at +4°C short term. Store at -20°C long term. Avoid freeze / thaw cycle.

**p57 Kip2 Antibody - Protein Information****Name** CDKN1C**Synonyms** KIP2**Function**

Potent tight-binding inhibitor of several G1 cyclin/CDK complexes (cyclin E-CDK2, cyclin D2-CDK4, and cyclin A-CDK2) and, to lesser extent, of the mitotic cyclin B-CDC2. Negative regulator of cell proliferation. May play a role in maintenance of the non-proliferative state throughout life.

**Cellular Location**

Nucleus.

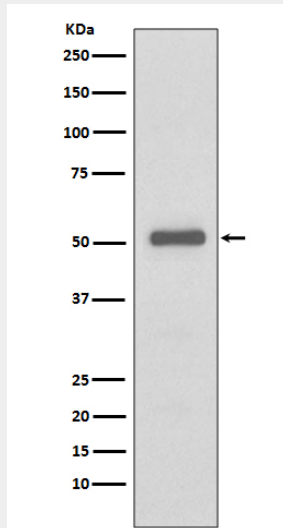
**Tissue Location**

Expressed in the heart, brain, lung, skeletal muscle, kidney, pancreas and testis. Expressed in the eye. High levels are seen in the placenta while low levels are seen in the liver

**p57 Kip2 Antibody - Protocols**

Provided below are standard protocols that you may find useful for product applications.

- [Western Blot](#)
- [Blocking Peptides](#)
- [Dot Blot](#)
- [Immunohistochemistry](#)
- [Immunofluorescence](#)
- [Immunoprecipitation](#)
- [Flow Cytometry](#)
- [Cell Culture](#)

**p57 Kip2 Antibody - Images**

Western blot analysis on HeLa cell using p57 Kip2 Antibody.