

**UCLH3 Antibody**  
**Rabbit mAb**  
**Catalog # AP90294****Specification**

---

**UCLH3 Antibody - Product Information**

Application	WB
Primary Accession	<a href="#">P15374</a>
Reactivity	Rat
Clonality	Monoclonal
<b>Other Names</b>	
UCH-L3; Ubiquitin thiolesterase L3; Ubiquitin carboxyl-terminal hydrolase isozyme L3;UCLH3;	
Isotype	Rabbit IgG
Host	Rabbit
Calculated MW	26183 Da

**UCLH3 Antibody - Additional Information**

Dilution	WB~~1:1000
Purification	Affinity-chromatography
Immunogen	A synthesized peptide derived from human UCLH3
Description	Deubiquitinating enzyme (DUB) that controls levels of cellular ubiquitin through processing of ubiquitin precursors and ubiquitinated proteins. Thiol protease that recognizes and hydrolyzes a peptide bond at the C-terminal glycine of either ubiquitin or NEDD8. Has a 10-fold preference for Arg and Lys at position P3", and exhibits a preference towards 'Lys-48'-linked Ubiquitin chains. Deubiquitinates ENAC in apical compartments, thereby regulating apical membrane recycling.
Storage Condition and Buffer	Rabbit IgG in phosphate buffered saline , pH 7.4, 150mM NaCl, 0.02% sodium azide and 50% glycerol. Store at +4°C short term. Store at -20°C long term. Avoid freeze / thaw cycle.

**UCLH3 Antibody - Protein Information****Name** UCLH3**Function**

Deubiquitinating enzyme (DUB) that controls levels of cellular ubiquitin through processing of ubiquitin precursors and ubiquitinated proteins. Thiol protease that recognizes and hydrolyzes a peptide bond at the C-terminal glycine of either ubiquitin or NEDD8. Has a 10-fold preference for

Arg and Lys at position P3", and exhibits a preference towards 'Lys-48'-linked ubiquitin chains. Deubiquitinates ENAC in apical compartments, thereby regulating apical membrane recycling. Indirectly increases the phosphorylation of IGFIR, AKT and FOXO1 and promotes insulin-signaling and insulin-induced adipogenesis. Required for stress-response retinal, skeletal muscle and germ cell maintenance. May be involved in working memory. Can hydrolyze UBB(+1), a mutated form of ubiquitin which is not effectively degraded by the proteasome and is associated with neurodegenerative disorders.

**Cellular Location**

Cytoplasm.

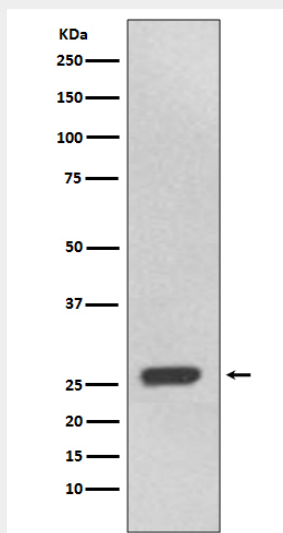
**Tissue Location**

Highly expressed in heart, skeletal muscle, and testis.

**UCHL3 Antibody - Protocols**

Provided below are standard protocols that you may find useful for product applications.

- [Western Blot](#)
- [Blocking Peptides](#)
- [Dot Blot](#)
- [Immunohistochemistry](#)
- [Immunofluorescence](#)
- [Immunoprecipitation](#)
- [Flow Cytometry](#)
- [Cell Culture](#)

**UCHL3 Antibody - Images**

Western blot analysis of UCHL3 expression in 293T cell lysate.