

CDC7 Antibody
Rabbit mAb
Catalog # AP90296**Specification**

CDC7 Antibody - Product Information

Application	WB, FC
Primary Accession	O00311
Reactivity	Rat
Clonality	Monoclonal

Other Names

Cell division cycle 7-related protein kinase, EC 2.7.11.1, CDC7-related kinase, HsCdc7, huCdc7, CDC7, CDC7L1; Hsk1 ; CDC7 kinase

Isotype	Rabbit IgG
Host	Rabbit
Calculated MW	63888 Da

CDC7 Antibody - Additional Information

Dilution	WB~~1:1000 FC~~1:10~50
Purification	Affinity-chromatography
Immunogen	A synthesized peptide derived from human CDC7
Description	DNA replication in eukaryotic cells is dependent on the phosphorylation of the pre-replicative complex (preRC) at the origin of replication. Two complexes of proteins mediate this event, the cyclin dependent kinase (CDK) complex, and the Cdc7 kinase-ASK complex. Human Cdc7 kinase consists of 574 amino acids with a molecular weight of 55 kDa. The activity of Cdc7 kinase oscillates during cell cycle. The major targets of Cdc7 kinase are proteins that belong to the MCM complex (mini chromosome maintenance proteins). Rabbit IgG in phosphate buffered saline , pH 7.4, 150mM NaCl, 0.02% sodium azide and 50% glycerol. Store at +4°C short term. Store at -20°C long term. Avoid freeze / thaw cycle.
Storage Condition and Buffer	

CDC7 Antibody - Protein Information

Name CDC7 ([HGNC:1745](#))

Synonyms CDC7L1

Function

Kinase involved in initiation of DNA replication. Phosphorylates critical substrates that regulate the G1/S phase transition and initiation of DNA replication, such as MCM proteins and CLASPIN.

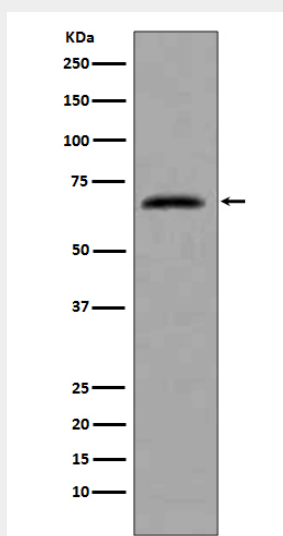
Cellular Location

Nucleus.

CDC7 Antibody - Protocols

Provided below are standard protocols that you may find useful for product applications.

- [Western Blot](#)
- [Blocking Peptides](#)
- [Dot Blot](#)
- [Immunohistochemistry](#)
- [Immunofluorescence](#)
- [Immunoprecipitation](#)
- [Flow Cytometry](#)
- [Cell Culture](#)

CDC7 Antibody - Images

Western blot analysis of extracts from HeLa cells, using CDC7 antibody.