

Paxillin Antibody
Rabbit mAb
Catalog # AP90317**Specification**

Paxillin Antibody - Product Information

Application	WB, IHC, ICC, IP
Primary Accession	P49023
Reactivity	Rat
Clonality	Monoclonal

Other Names

Paired box protein Pax-1; PAX-1; PAXI; paxillin; paxillin alpha;

Isotype	Rabbit IgG
Host	Rabbit
Calculated MW	64505 Da

Paxillin Antibody - Additional Information

Dilution	WB~~1:1000 IHC~~1:100~500 ICC~~N/A IP~~N/A
Purification	Affinity-chromatography
Immunogen	A synthesized peptide derived from human Paxillin
Description	Cytoskeletal protein involved in actin-membrane attachment at sites of cell adhesion to the extracellular matrix (focal adhesion). PXN is a multi-domain cytoskeletal protein that localizes primarily to focal adhesion sites to the extracellular matrix. Phosphorylated by focal adhesion kinase (FAK) and is a component of integrin signaling. Its phosphorylation provides docking sites for recruitment of signaling molecules to focal adhesions.
Storage Condition and Buffer	Rabbit IgG in phosphate buffered saline , pH 7.4, 150mM NaCl, 0.02% sodium azide and 50% glycerol. Store at +4°C short term. Store at -20°C long term. Avoid freeze / thaw cycle.

Paxillin Antibody - Protein Information**Name** PXN ([HGNC:9718](#))**Function**

Cytoskeletal protein involved in actin-membrane attachment at sites of cell adhesion to the

extracellular matrix (focal adhesion). Recruits other proteins such as TRIM15 to focal adhesion.

Cellular Location

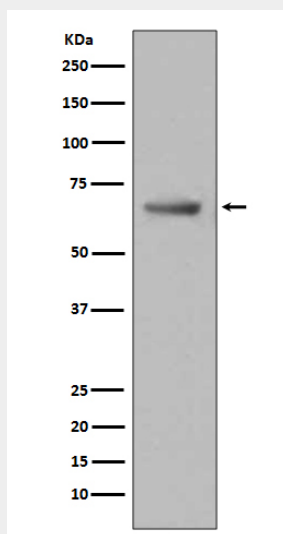
Cytoplasm, cytoskeleton. Cell junction, focal adhesion. Cytoplasm, cell cortex
{ECO:0000250|UniProtKB:Q8VI36}. Note=Colocalizes with integrins at the cell periphery.
Colocalize with PXN to membrane ruffles and the leading edge of migrating cells
(PubMed:23128389). {ECO:0000250, ECO:0000269|PubMed:23128389}

Paxillin Antibody - Protocols

Provided below are standard protocols that you may find useful for product applications.

- [Western Blot](#)
- [Blocking Peptides](#)
- [Dot Blot](#)
- [Immunohistochemistry](#)
- [Immunofluorescence](#)
- [Immunoprecipitation](#)
- [Flow Cytometry](#)
- [Cell Culture](#)

Paxillin Antibody - Images



Western blot analysis of Paxillin expression in HeLa cell lysate.