

**IL1 beta Antibody**  
**Rabbit mAb**  
**Catalog # AP90321****Specification**

---

**IL1 beta Antibody - Product Information**

Application	<b>WB</b>
Primary Accession	<a href="#">P01584</a>
Reactivity	<b>Human</b>
Clonality	<b>Monoclonal</b>
<b>Other Names</b>	
Catabolin; H1; Hematopoietin 1; IFN beta inducing factor; IL 1; IL 1 beta; IL 1B; IL-1 beta; IL1 BETA; IL1B; IL1B; IL1F2; Interleukin 1 beta; Interleukin 1 beta precursor; Interleukin-1 beta; LAF; OAF;	
Isotype	<b>Rabbit IgG</b>
Host	<b>Rabbit</b>
Calculated MW	<b>30748 Da</b>

**IL1 beta Antibody - Additional Information**

Dilution	<b>WB~~1:1000</b>
Purification	<b>Affinity-chromatography</b>
Immunogen	<b>A synthesized peptide derived from human IL1 beta</b>
Description	<b>Produced by activated macrophages, IL-1 stimulates thymocyte proliferation by inducing IL-2 release, B-cell maturation and proliferation, and fibroblast growth factor activity. IL-1 proteins are involved in the inflammatory response, being identified as endogenous pyrogens, and are reported to stimulate the release of prostaglandin and collagenase from synovial cells.</b>
Storage Condition and Buffer	<b>Rabbit IgG in phosphate buffered saline , pH 7.4, 150mM NaCl, 0.02% sodium azide and 50% glycerol. Store at +4°C short term. Store at -20°C long term. Avoid freeze / thaw cycle.</b>

**IL1 beta Antibody - Protein Information****Name** IL1B ([HGNC:5992](#))**Synonyms** IL1F2**Function**

Potent pro-inflammatory cytokine (PubMed:<a href="http://www.uniprot.org/citations/10653850" target="\_blank">10653850</a>, PubMed:<a href="http://www.uniprot.org/citations/12794819"

target="\_blank">12794819</a>, PubMed:<a href="http://www.uniprot.org/citations/28331908" target="\_blank">28331908</a>, PubMed:<a href="http://www.uniprot.org/citations/3920526" target="\_blank">3920526</a>). Initially discovered as the major endogenous pyrogen, induces prostaglandin synthesis, neutrophil influx and activation, T-cell activation and cytokine production, B-cell activation and antibody production, and fibroblast proliferation and collagen production (PubMed:<a href="http://www.uniprot.org/citations/3920526" target="\_blank">3920526</a>). Promotes Th17 differentiation of T-cells. Synergizes with IL12/interleukin-12 to induce IFNG synthesis from T-helper 1 (Th1) cells (PubMed:<a href="http://www.uniprot.org/citations/10653850" target="\_blank">10653850</a>). Plays a role in angiogenesis by inducing VEGF production synergistically with TNF and IL6 (PubMed:<a href="http://www.uniprot.org/citations/12794819" target="\_blank">12794819</a>). Involved in transduction of inflammation downstream of pyroptosis: its mature form is specifically released in the extracellular milieu by passing through the gasdermin-D (GSDMD) pore (PubMed:<a href="http://www.uniprot.org/citations/33377178" target="\_blank">33377178</a>, PubMed:<a href="http://www.uniprot.org/citations/33883744" target="\_blank">33883744</a>). Acts as a sensor of *S.pyogenes* infection in skin: cleaved and activated by pyogenes SpeB protease, leading to an inflammatory response that prevents bacterial growth during invasive skin infection (PubMed:<a href="http://www.uniprot.org/citations/28331908" target="\_blank">28331908</a>).

### Cellular Location

Cytoplasm, cytosol. Secreted. Lysosome Secreted, extracellular exosome {ECO:0000250|UniProtKB:P10749} Note=The precursor is cytosolic (PubMed:15192144). In response to inflammasome-activating signals, such as ATP for NLRP3 inflammasome or bacterial flagellin for NLRC4 inflammasome, cleaved and secreted (PubMed:24201029, PubMed:33377178, PubMed:33883744). Mature form is secreted and released in the extracellular milieu by passing through the gasdermin-D (GSDMD) pore (PubMed:33883744). In contrast, the precursor form is not released, due to the presence of an acidic region that is proteolytically removed by CASP1 during maturation (PubMed:33883744). The secretion is dependent on protein unfolding and facilitated by the cargo receptor TMED10 (PubMed:32272059)

### Tissue Location

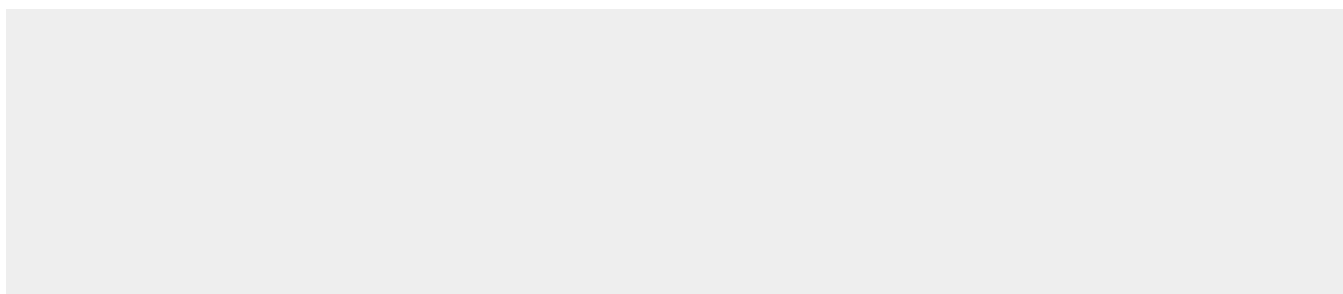
Expressed in activated monocytes/macrophages (at protein level).

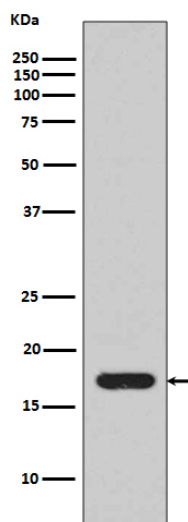
## IL1 beta Antibody - Protocols

Provided below are standard protocols that you may find useful for product applications.

- [Western Blot](#)
- [Blocking Peptides](#)
- [Dot Blot](#)
- [Immunohistochemistry](#)
- [Immunofluorescence](#)
- [Immunoprecipitation](#)
- [Flow Cytometry](#)
- [Cell Culture](#)

## IL1 beta Antibody - Images





Western blot analysis of extracts from recombinant IL1 beta, using IL1 beta antibody.