

RAIDD Antibody
Rabbit mAb
Catalog # AP90338**Specification**

RAIDD Antibody - Product Information

Application	WB, IHC, FC, ICC, IP
Primary Accession	P78560
Clonality	Monoclonal
Other Names	
CRADD;MGC9163;RAIDD;Death adaptor molecule RAIDD;Death domain containing protein CRADD;	
Isotype	Rabbit IgG
Host	Rabbit
Calculated MW	22745 Da

RAIDD Antibody - Additional Information

Dilution	WB~~1:1000 IHC~~1:100~500 FC~~1:10~50 ICC~~N/A IP~~N/A
Purification	Affinity-chromatography
Immunogen	A synthesized peptide derived from human RAIDD
Description	The receptor interacting protein RIP is a death domain-containing serine/threonine kinase which associates with FAS or the TNF-R1 binding protein TRADD. RAIDD (RIP-associated ICH-1/Ced-3 homologous protein with a death domain) has been identified as a RIP binding protein that also associates with members of the caspase family, providing a link between activation of the TNF-Rs and the triggering of the cysteine protease cascade. The amino-terminal domain of RAIDD shares significant homology with the prodomain of ICH-1 and mediates the binding of RAIDD to this cysteine protease.
Storage Condition and Buffer	Rabbit IgG in phosphate buffered saline , pH 7.4, 150mM NaCl, 0.02% sodium azide and 50% glycerol. Store at +4°C short term. Store at -20°C long term. Avoid freeze / thaw cycle.

RAIDD Antibody - Protein Information

Name CRADD

Synonyms RAIDD

Function

Adapter protein that associates with PIDD1 and the caspase CASP2 to form the PIDDosome, a complex that activates CASP2 and triggers apoptosis (PubMed:15073321, PubMed:16652156, PubMed:17159900, PubMed:17289572, PubMed:9044836). Also recruits CASP2 to the TNFR-1 signaling complex through its interaction with RIPK1 and TRADD and may play a role in the tumor necrosis factor-mediated signaling pathway (PubMed:8985253).

Cellular Location

Cytoplasm {ECO:0000250|UniProtKB:O88843}. Nucleus {ECO:0000250|UniProtKB:O88843}

Tissue Location

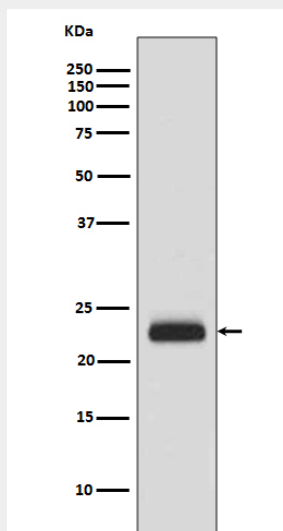
Constitutively expressed in most tissues, with particularly high expression in adult heart, testis, liver, skeletal muscle, fetal liver and kidney.

RAIDD Antibody - Protocols

Provided below are standard protocols that you may find useful for product applications.

- [Western Blot](#)
- [Blocking Peptides](#)
- [Dot Blot](#)
- [Immunohistochemistry](#)
- [Immunofluorescence](#)
- [Immunoprecipitation](#)
- [Flow Cytometry](#)
- [Cell Culture](#)

RAIDD Antibody - Images



Western blot analysis of RAIDD expression in HeLa cell lysate.