

**TCF3 Antibody**  
**Rabbit mAb**  
**Catalog # AP90340**

## Specification

---

### TCF3 Antibody - Product Information

Application	WB, FC
Primary Accession	<a href="#">Q9HCS4</a>
Clonality	Monoclonal
<b>Other Names</b>	
Transcription factor 7-like 1; HMG box transcription factor 3; TCF-3; TCF7L1; TCF3;	

Isotype	Rabbit IgG
Host	Rabbit
Calculated MW	62631 Da

### TCF3 Antibody - Additional Information

Purification	Affinity-chromatography
Immunogen	A synthesized peptide derived from human TCF3
Description	Transcriptional regulator. Involved in the initiation of neuronal differentiation. Heterodimers between TCF3 and tissue-specific basic helix-loop-helix (bHLH) proteins play major roles in determining tissue-specific cell fate during embryogenesis, like muscle or early B-cell differentiation. Dimers bind DNA on E- box motifs: 5'-CANNTG-3'. Binds to the kappa-E2 site in the kappa immunoglobulin gene enhancer. Binds to IEB1 and IEB2, which are short DNA sequences in the insulin gene transcription control region. Rabbit IgG in phosphate buffered saline , pH 7.4, 150mM NaCl, 0.02% sodium azide and 50% glycerol. Store at +4°C short term. Store at -20°C long term. Avoid freeze / thaw cycle.
Storage Condition and Buffer	

### TCF3 Antibody - Protein Information

**Name** TCF7L1

**Synonyms** TCF3

#### Function

Participates in the Wnt signaling pathway. Binds to DNA and acts as a repressor in the absence of CTNNB1, and as an activator in its presence. Necessary for the terminal differentiation of

epidermal cells, the formation of keratohyalin granules and the development of the barrier function of the epidermis (By similarity). Down-regulates NQO1, leading to increased mitomycin c resistance.

**Cellular Location**

Nucleus.

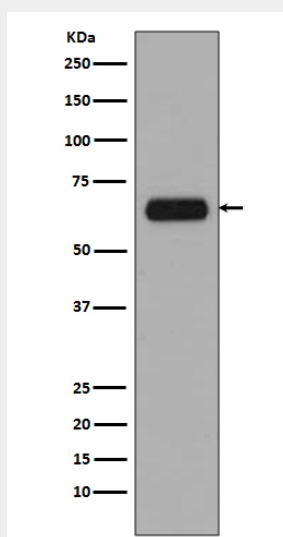
**Tissue Location**

Detected in hair follicles and skin keratinocytes, and at lower levels in stomach epithelium

**TCF3 Antibody - Protocols**

Provided below are standard protocols that you may find useful for product applications.

- [Western Blot](#)
- [Blocking Peptides](#)
- [Dot Blot](#)
- [Immunohistochemistry](#)
- [Immunofluorescence](#)
- [Immunoprecipitation](#)
- [Flow Cytometry](#)
- [Cell Culture](#)

**TCF3 Antibody - Images**

Western blot analysis of TCF3 expression in A431 cell lysate.