

PI 3 Kinase Class 3 Antibody
Rabbit mAb
Catalog # AP90362**Specification****PI 3 Kinase Class 3 Antibody - Product Information**

Application	WB, IHC
Primary Accession	Q8NEB9
Reactivity	Rat
Clonality	Monoclonal

Other Names

PI3-kinase type 3; PI3K type 3; PI3 kinase type 3; Phosphatidylinositol 3-kinase p100 subunit; Phosphoinositide-3-kinase class 3; hVps34; PIK3C3; Vps 34; Vps34

Isotype	Rabbit IgG
Host	Rabbit
Calculated MW	101549 Da

PI 3 Kinase Class 3 Antibody - Additional Information

Dilution	WB~~1:1000 IHC~~1:100~500
Purification	Affinity-chromatography
Immunogen	A synthesized peptide derived from human PI 3 Kinase Class 3
Description	Catalytic subunit of the PI3K complex that mediates formation of phosphatidylinositol 3-phosphate. Involved in the transport of lysosomal enzyme precursors to lysosomes. Required for the abscission step in cytokinesis.
Storage Condition and Buffer	Rabbit IgG in phosphate buffered saline , pH 7.4, 150mM NaCl, 0.02% sodium azide and 50% glycerol. Store at +4°C short term. Store at -20°C long term. Avoid freeze / thaw cycle.

PI 3 Kinase Class 3 Antibody - Protein Information

Name PIK3C3 ([HGNC:8974](#))

Synonyms VPS34 {ECO:0000305}

Function

Catalytic subunit of the PI3K complex that mediates formation of phosphatidylinositol 3-phosphate; different complex forms are believed to play a role in multiple membrane trafficking pathways: PI3KC3-C1 is involved in initiation of autophagosomes and PI3KC3-C2 in maturation of autophagosomes and endocytosis (PubMed:14617358, PubMed:<a href="http://www.uniprot.org/citations/33637724"

target="_blank">33637724, PubMed:7628435). As part of PI3KC3-C1, promotes endoplasmic reticulum membrane curvature formation prior to vesicle budding (PubMed:32690950). Involved in regulation of degradative endocytic trafficking and required for the abscission step in cytokinesis, probably in the context of PI3KC3-C2 (PubMed:20208530, PubMed:20643123). Involved in the transport of lysosomal enzyme precursors to lysosomes (By similarity). Required for transport from early to late endosomes (By similarity).

Cellular Location

Midbody. Late endosome. Cytoplasmic vesicle, autophagosome. Note=As component of the PI3K complex I localized to pre-autophagosome structures. As component of the PI3K complex II localized predominantly to endosomes (PubMed:14617358). Also localizes to discrete punctae along the ciliary axoneme and to the base of the ciliary axoneme (By similarity)
{ECO:0000250|UniProtKB:Q6PF93, ECO:0000305|PubMed:14617358}

Tissue Location

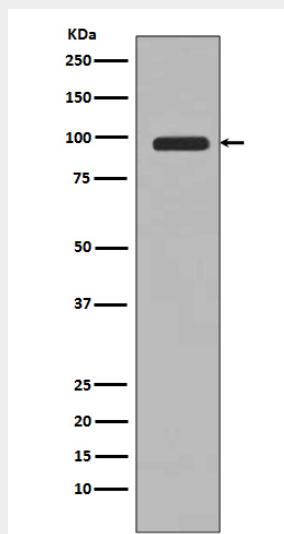
Ubiquitously expressed, with a highest expression in skeletal muscle.

PI 3 Kinase Class 3 Antibody - Protocols

Provided below are standard protocols that you may find useful for product applications.

- [Western Blot](#)
- [Blocking Peptides](#)
- [Dot Blot](#)
- [Immunohistochemistry](#)
- [Immunofluorescence](#)
- [Immunoprecipitation](#)
- [Flow Cytometry](#)
- [Cell Culture](#)

PI 3 Kinase Class 3 Antibody - Images



Western blot analysis of PI 3 Kinase Class 3 expression in 293T cell lysate.