

Cytokeratin 20 Antibody
Rabbit mAb
Catalog # AP90371**Specification**

Cytokeratin 20 Antibody - Product Information

Application	WB, IHC, FC, ICC, IP
Primary Accession	P35900
Reactivity	Rat
Clonality	Monoclonal

Other Names

CD20; CK-20; CK20; cytokeratin 20; Cytokeratin-20; K1C20; K20; keratin 20; Keratin, type I cytoskeletal 20; Keratin-20; KRT20; KRT21; MGC35423; Protein IT;

Isotype	Rabbit IgG
Host	Rabbit
Calculated MW	48487 Da

Cytokeratin 20 Antibody - Additional Information

Dilution	WB~~1:1000 IHC~~1:100~500 FC~~1:10~50 ICC~~N/A IP~~N/A
Purification	Affinity-chromatography
Immunogen	A synthesized peptide derived from human Cytokeratin 20
Description	Intermediate-sized filament (IF) protein designated cytokeratin (CK) 20 is a major cellular protein of mature enterocytes and goblet cells commonly found in mucosal epithelium of the mammalian gastrointestinal tract. Results strongly suggest that transcriptional regulation of keratin genes in the intestinal epithelium occurs at the level of both immature and terminally differentiated epithelial cells, and is tightly regulated during both fetal development and crypt-to-villus differentiation of the intestinal epithelium.
Storage Condition and Buffer	Rabbit IgG in phosphate buffered saline , pH 7.4, 150mM NaCl, 0.02% sodium azide and 50% glycerol. Store at +4°C short term. Store at -20°C long term. Avoid freeze / thaw cycle.

Cytokeratin 20 Antibody - Protein Information

Name KRT20

Function

Plays a significant role in maintaining keratin filament organization in intestinal epithelia. When phosphorylated, plays a role in the secretion of mucin in the small intestine (By similarity).

Cellular Location

Cytoplasm

Tissue Location

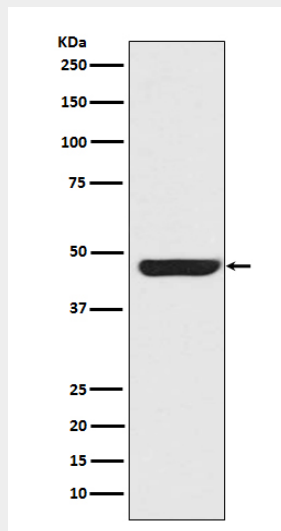
Expressed predominantly in the intestinal epithelium. Expressed in luminal cells of colonic mucosa. Also expressed in the Merkel cells of keratinized oral mucosa; specifically at the tips of some rete ridges of the gingival mucosa, in the basal layer of the palatal mucosa and in the taste buds of lingual mucosa

Cytokeratin 20 Antibody - Protocols

Provided below are standard protocols that you may find useful for product applications.

- [Western Blot](#)
- [Blocking Peptides](#)
- [Dot Blot](#)
- [Immunohistochemistry](#)
- [Immunofluorescence](#)
- [Immunoprecipitation](#)
- [Flow Cytometry](#)
- [Cell Culture](#)

Cytokeratin 20 Antibody - Images



Western blot analysis of Cytokeratin 20 expression in SW480 cell lysate.