

CD90 / Thy1 Antibody
Rabbit mAb
Catalog # AP90374**Specification**

CD90 / Thy1 Antibody - Product Information

Application	WB, IHC
Primary Accession	P04216
Reactivity	Rat
Clonality	Monoclonal
Other Names	
Thy-1 membrane glycoprotein; Thy-1 antigen; CDw90; CD90; THY1;	
Isotype	Rabbit IgG
Host	Rabbit
Calculated MW	17935 Da

CD90 / Thy1 Antibody - Additional Information

Dilution	WB~~1:1000 IHC~~1:100~500
Purification	Affinity-chromatography
Immunogen	A synthesized peptide derived from human CD90 / Thy1
Description	Thy1 is a GPI-anchored, developmentally regulated protein involved in various signaling cascades that mediate neurite outgrowth, T cell activation, tumor suppression, apoptosis, and fibrosis. It is highly expressed on the surface of adult neurons and is thought to play a role in modulating adhesive and migratory events, such as neurite extension.
Storage Condition and Buffer	Rabbit IgG in phosphate buffered saline , pH 7.4, 150mM NaCl, 0.02% sodium azide and 50% glycerol. Store at +4°C short term. Store at -20°C long term. Avoid freeze / thaw cycle.

CD90 / Thy1 Antibody - Protein Information**Name** THY1**Function**

May play a role in cell-cell or cell-ligand interactions during synaptogenesis and other events in the brain.

Cellular Location

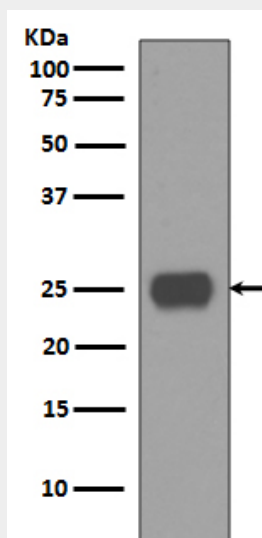
Cell membrane; Lipid-anchor, GPI- anchor

CD90 / Thy1 Antibody - Protocols

Provided below are standard protocols that you may find useful for product applications.

- [Western Blot](#)
- [Blocking Peptides](#)
- [Dot Blot](#)
- [Immunohistochemistry](#)
- [Immunofluorescence](#)
- [Immunoprecipitation](#)
- [Flow Cytometry](#)
- [Cell Culture](#)

CD90 / Thy1 Antibody - Images



Western blot analysis of CD90 expression in Human fetal brain lysate.