

Lactate Dehydrogenase Antibody
Rabbit mAb
Catalog # AP90387**Specification**

Lactate Dehydrogenase Antibody - Product Information

Application	WB, IHC, FC, ICC, IP
Primary Accession	P00338
Reactivity	Rat
Clonality	Monoclonal
Other Names	
LDHA; LDH-M; LDH1; PIG19; GSD11; TRG5; Proliferation inducing gene 19;	
Isotype	Rabbit IgG
Host	Rabbit
Calculated MW	36689 Da

Lactate Dehydrogenase Antibody - Additional Information

Dilution	WB~~1:1000 IHC~~1:100~500 FC~~1:10~50 ICC~~N/A IP~~N/A
Purification	Affinity-chromatography
Immunogen	A synthesized peptide derived from human Lactate Dehydrogenase
Description	Lactate dehydrogenase (LDH) catalyzes the interconversion of pyruvate and NADH to lactate and NAD ⁺ . When the oxygen supply is too low for mitochondrial ATP production, this reaction recycles NADH generated in glycolysis to NAD ⁺ , which reenters glycolysis. The major form of LDH found in muscle cells is the A (LDHA) isozyme.
Storage Condition and Buffer	Rabbit IgG in phosphate buffered saline , pH 7.4, 150mM NaCl, 0.02% sodium azide and 50% glycerol. Store at +4°C short term. Store at -20°C long term. Avoid freeze / thaw cycle.

Lactate Dehydrogenase Antibody - Protein Information**Name** LDHA ([HGNC:6535](#))**Function**

Interconverts simultaneously and stereospecifically pyruvate and lactate with concomitant interconversion of NADH and NAD(+).

Cellular Location

Cytoplasm.

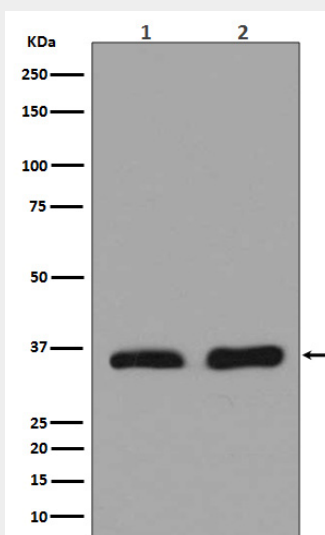
Tissue Location

Predominantly expressed in anaerobic tissues such as skeletal muscle and liver.

Lactate Dehydrogenase Antibody - Protocols

Provided below are standard protocols that you may find useful for product applications.

- [Western Blot](#)
- [Blocking Peptides](#)
- [Dot Blot](#)
- [Immunohistochemistry](#)
- [Immunofluorescence](#)
- [Immunoprecipitation](#)
- [Flow Cytometry](#)
- [Cell Culture](#)

Lactate Dehydrogenase Antibody - Images

Western blot analysis of LDHA expression in (1)Hela cell lysate;(2)Human heart lysate.