

STAT6 Antibody
Rabbit mAb
Catalog # AP90390**Specification**

STAT6 Antibody - Product Information

Application	WB, IHC, ICC, IP
Primary Accession	P42226
Clonality	Monoclonal
Other Names	
IL-4-STAT; Signal transducer and activator of transcription 6; interleukin-4 induced; STAT, interleukin4-induced; STAT6; STAT6B; STAT6C; transcription factor IL-4 STAT	
Isotype	Rabbit IgG
Host	Rabbit
Calculated MW	94135 Da

STAT6 Antibody - Additional Information

Dilution	WB~~1:1000 IHC~~1:100~500 ICC~~N/A IP~~N/A
Purification	Affinity-chromatography
Immunogen	A synthesized peptide derived from human STAT6
Description	STAT6 transcription factor of the STAT family. Plays a central role in IL4-mediated biological responses. Induces the expression of BCL2L1/BCL-X(L), which is responsible for the anti-apoptotic activity of IL4.
Storage Condition and Buffer	Rabbit IgG in phosphate buffered saline , pH 7.4, 150mM NaCl, 0.02% sodium azide and 50% glycerol. Store at +4°C short term. Store at -20°C long term. Avoid freeze / thaw cycle.

STAT6 Antibody - Protein Information**Name** STAT6**Function**

Carries out a dual function: signal transduction and activation of transcription. Involved in IL4/interleukin-4- and IL3/interleukin-3-mediated signaling.

Cellular Location

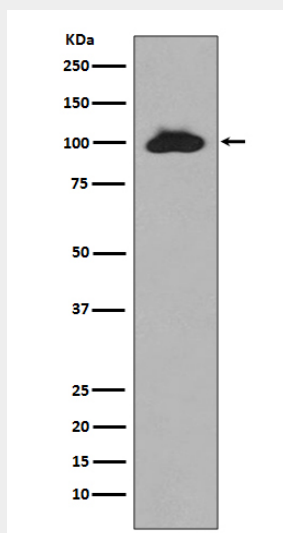
Cytoplasm. Nucleus. Note=Translocated into the nucleus in response to phosphorylation

STAT6 Antibody - Protocols

Provided below are standard protocols that you may find useful for product applications.

- [Western Blot](#)
- [Blocking Peptides](#)
- [Dot Blot](#)
- [Immunohistochemistry](#)
- [Immunofluorescence](#)
- [Immunoprecipitation](#)
- [Flow Cytometry](#)
- [Cell Culture](#)

STAT6 Antibody - Images



Western blot analysis of STAT6 expression in Raji cell lysate.