

C Reactive Protein Antibody
Rabbit mAb
Catalog # AP90391**Specification**

C Reactive Protein Antibody - Product Information

Application	WB, IHC, IP
Primary Accession	P02741
Clonality	Monoclonal
Other Names	
CRP; Pentraxin 1; PTX1; C reactive protein pentraxin related;	
Isotype	Rabbit IgG
Host	Rabbit
Calculated MW	25039 Da

C Reactive Protein Antibody - Additional Information

Dilution	WB~~1:1000 IHC~~1:100~500 IP~~N/A
Purification	Affinity-chromatography
Immunogen	A synthesized peptide derived from human C Reactive Protein
Description	Serum CRP values are routinely measured to detect or monitor many human diseases and minor elevations of C-reactive protein are predictive of cardiovascular events in patients with coronary heart disease. CRP promotes host defense, is an efficient activator of the classical C cascade, and shown to be opsonic. The opsonic and C activation activities are responsible for the nonspecific host defense activities providing protection in the preimmune stage of acute infections.
Storage Condition and Buffer	Rabbit IgG in phosphate buffered saline , pH 7.4, 150mM NaCl, 0.02% sodium azide and 50% glycerol. Store at +4°C short term. Store at -20°C long term. Avoid freeze / thaw cycle.

C Reactive Protein Antibody - Protein Information**Name** CRP**Synonyms** PTX1**Function**

Displays several functions associated with host defense: it promotes agglutination, bacterial capsular swelling, phagocytosis and complement fixation through its calcium-dependent binding to phosphorylcholine. Can interact with DNA and histones and may scavenge nuclear material released from damaged circulating cells.

Cellular Location

Secreted.

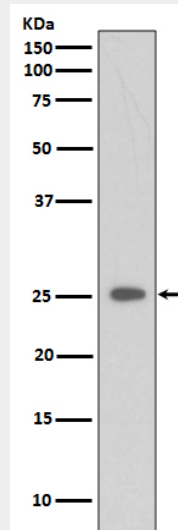
Tissue Location

Found in plasma.

C Reactive Protein Antibody - Protocols

Provided below are standard protocols that you may find useful for product applications.

- [Western Blot](#)
- [Blocking Peptides](#)
- [Dot Blot](#)
- [Immunohistochemistry](#)
- [Immunofluorescence](#)
- [Immunoprecipitation](#)
- [Flow Cytometry](#)
- [Cell Culture](#)

C Reactive Protein Antibody - Images

Western blot analysis of CRP expression in Etoposide treated 293 whole cell lysates.