

p16 INK Antibody
Rabbit mAb
Catalog # AP90396

Specification

p16 INK Antibody - Product Information

Application	WB, IHC, FC, ICC, IP
Primary Accession	P42771
Clonality	Monoclonal
Other Names	
CDKN2A; CDKN2; MTS1; isoforms 1/2/3; Cyclin-dependent kinase 4 inhibitor A; CDK4I; P16INK4; p16INK4a; Multiple tumor suppressor 1;	
Isotype	Rabbit IgG
Host	Rabbit
Calculated MW	16533 Da

p16 INK Antibody - Additional Information

Dilution	WB~~1:1000 IHC~~1:100~500 FC~~1:10~50 ICC~~N/A IP~~N/A
Purification	Affinity-chromatography
Immunogen	A synthesized peptide derived from human p16 INK
Description	p16-INK4A a cell-cycle regulatory protein that interacts with CDK4 and CDK6, inhibiting their ability to interact with cyclins D. Inhibits the phosphorylation of the retinoblastoma protein by CDK4 or CDK6. Four alternatively spliced isoforms have been reported.
Storage Condition and Buffer	Rabbit IgG in phosphate buffered saline , pH 7.4, 150mM NaCl, 0.02% sodium azide and 50% glycerol. Store at +4°C short term. Store at -20°C long term. Avoid freeze / thaw cycle.

p16 INK Antibody - Protein Information

Name CDKN2A ([HGNC:1787](#))

Synonyms CDKN2, MTS1

Function

Acts as a negative regulator of the proliferation of normal cells by interacting strongly with CDK4 and CDK6. This inhibits their ability to interact with cyclins D and to phosphorylate the

retinoblastoma protein.

Cellular Location

Cytoplasm. Nucleus

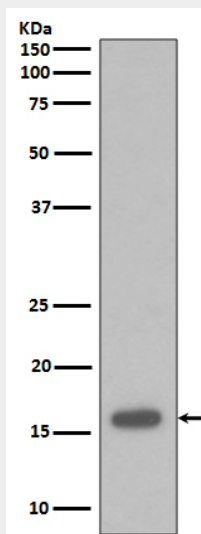
Tissue Location

Widely expressed but not detected in brain or skeletal muscle. Isoform 3 is pancreas-specific

p16 INK Antibody - Protocols

Provided below are standard protocols that you may find useful for product applications.

- [Western Blot](#)
- [Blocking Peptides](#)
- [Dot Blot](#)
- [Immunohistochemistry](#)
- [Immunofluorescence](#)
- [Immunoprecipitation](#)
- [Flow Cytometry](#)
- [Cell Culture](#)

p16 INK Antibody - Images

Western blot analysis of p16 INK expression in 293T cell lysate.